

School Leaver Prospectus 2024/25



**A LEVELS
T LEVELS
VOCATIONAL COURSES
APPRENTICESHIPS
FOUNDATION LEARNING**

**YOUR JOURNEY
YOUR CAREER
IT STARTS HERE**



Welcome
from
Sam Wright

Hello and welcome to Selby College's 2024/25 School Leaver Prospectus.

At Selby College, our ethos has always been about providing a well-rounded education for our students based on their individual choices, capabilities and aspirations – ensuring that they can reach their full potential and achieve their future ambitions.

We do this by creating a well-rounded curriculum which is developed in partnership with our local and regional partners, ensuring that our students have the skills which are in demand now and in the future.

We understand that coming to college is about more than just learning and that's why we are committed to creating an environment where our students can grow and thrive both academically and personally. What's more, our highly-qualified, friendly and supportive staff will be there to support you every step of the way during your time with us.

You will be picking up this guide after what has been an exciting and successful year for the College, following its merger with Wakefield College to become the Heart of Yorkshire Education Group. This has enabled us to create even greater prospects for our students, including an expansion of our provision, enhanced enrichment opportunities, a Group-wide sport programme and more.

This includes our brand-new range of Level 1 courses which span from Animal Care to Hospitality & Catering to

Computing & Design, providing learners with a route to gain skills and knowledge in their chosen area.

Learners can also progress from Level 1 right up to Level 6 via our University Centre, meaning you can achieve a full degree right here at Selby College.

We hope that this guide will provide you with all the information that you need, but don't just take our word for it – come and see what we have to offer at one of our upcoming Open Events, which are listed on page 98.

In the meantime, if you have any questions or need any more information, please call our Student Central Team on 01757 211040 email studentcentral@heartofyorkshire.ac.uk, or visit our website www.selby.ac.uk.

Sam Wright
Principal and Chief Executive



Contents

Your Journey, Your Choice	04
Your Study Programme	06
Course Levels Explained	07
How to Apply	08
Transport Routes	09
Enriching Your Experience	10
Sport Enrichment	12
Student Central	14
First-rate Facilities	16
Work Placements	18
Higher Education	20
Sixth Form	22
Mentoring for Excellence	25
T Levels	38
Vocational Courses	42
Apprenticeships	92
Information for Parents	96
Additional Information	97
Sustainability	97
Open Events	98
Key Dates 2023/24	99

Selby College will take all reasonable steps to provide the educational services and range of courses as described in this 2024/25 School Leaver Prospectus and in other related documents.

However, it does not guarantee the provision of such services. The provision of courses is dependent on there being sufficient demand to make their operation viable for the College to run.

At the time of publication (September 2023) all course titles and information were correct. Updates to this Prospectus will be made to the online version available at www.selby.ac.uk.

Sixth Form Courses

Art, Design & Photography	26
A Level Art & Design (Photography & Art)	26
Business & Management	26
A Level Business	26
Computing	27
A Level Computer Science	27
English & Humanities	28
A Level English Language	28
A Level English Literature	28
A Level Geography	28
A Level History	29
A Level Law	29
Film, Media & Television	30
A Level Media Studies	30
Maths	33
A Level Mathematics	33
A Level Further Mathematics	33
Certificate in Core Maths	33
Science	34
A Level Biology	34
A Level Chemistry	34
A Level Physics	35
Social Sciences	36
Applied Criminology	36
A Level Psychology	36
A Level Sociology	36
Applied Psychology	36
Sport	37
Applied Sport & Exercise Science	37

T Level Courses

Construction	40
Digital Support Services	40
Education & Childcare	41
Health	41

Vocational Courses

Animal Care	44
Art, Design & Photography	46
Business & Management	48
Childcare, Early Years & Childhood Studies	50
Computing	52
Construction & Civil Engineering	56
Engineering	64
English for Speakers of Other Languages (ESOL)	66
Film, Media & Television	68
Foundation Learning	70
Hair & Beauty	72
Health, Social Care & Wellbeing	76
Hospitality & Catering	78
Horticulture	80
The Prince's Trust	82
Public Services	84
Science	86
Sport	88
Travel & Tourism	90

Apprenticeships

Apprenticeship Programmes	94
---------------------------	----

Your Journey Your Choice

Choose one of our five routes to success.



Everyone learns differently, which is why it's important to choose a type of course which is right for you. This leaflet will help you decide which type of course, as well as what course level is best suited to you and how they relate to other qualifications.

1 Sixth Form (A Levels)

If you have a real interest in your subjects, enjoy studying, are able to work independently and thrive in examinations, then an A Level programme is right for you.

Our A Levels are focused on facilitating subjects to ensure the majority of our students can progress on to Russell Group universities.

Students will choose 3 A Level subjects. The minimum requirement is at least five GCSEs at Grade 4 (or above), including Maths and English. Some A Levels will have additional requirements, such as a Grade 5 if the subject was taken at GCSE, or a Grade 5 or 6 in Maths.

Please see course descriptions for the individual entry requirements.

BTEC Level 3 Extended Certificates

These can be taken alongside your A Level options and have the same delivery mode and UCAS points as A Levels, but are more coursework based.

The Extended Project Qualification (EPQ)

Students may also choose to take an EPQ in their second year, which is equivalent to half an A Level and requires you to produce a single piece of work of your own choosing, demonstrating evidence of planning, preparation and research.

Find out more about our Sixth Form offer on pages 22 - 37.

2 T Levels

A new and exciting option for those who prefer a combination of classroom theory and practical learning in a real working environment. Get a head start towards your chosen career by gaining the skills and knowledge sought after by employers in the industry.

T Levels follow GCSEs and are equivalent to three A Levels. They've been co-created by the industry you want to be a part of, so you can gain the knowledge and skills you need to leap ahead of the crowd and into your desired career.

T Levels combine classroom theory, practical learning and a minimum of 315 hours (or 45 days) Industry Placement to make sure students have real experience of the workplace.

The two-year T Level courses have been developed in collaboration with employers and businesses so that the content will meet the needs of industry and thoroughly prepare students for work. They provide the knowledge and experience needed to open the door to highly skilled employment, a higher apprenticeship or entry to university.

- + Equivalent to 3 A Levels
- + 80% Classroom, 20% Industry Placement
- + Gain UCAS points for entry to university

Introduce yourself to T Levels on pages 38 - 40.

3 Vocational Courses

If you are looking for a course with a practical learning route that relates to a specific industry, then our wide range of vocational courses can provide you with the practical skills and underpinning knowledge needed for a specific job or career.

While there are many subject areas to choose from, it is worth bearing in mind that you can only study one vocational qualification at a time.

If you have a specific career in mind, prefer a practical way of learning, and assignments over exams, choose from our wide range of vocational courses from Levels 1 to 3.

Vocational courses prepare you to work in a trade, in a craft, as a technician, or in support roles in professions such as engineering, accountancy, nursing, medicine, architecture or law.

Our Vocational students gain experience in real working environments with excellent equipment, ensuring you have the facilities you need to help you succeed.

The labour market is fiercely competitive and employers can take their pick from a wide pool of candidates, so they're looking for more than just qualifications on paper. Studying a Vocational programme with us can give you the real-world experience that employers are looking for.

Explore our wide range of Vocational courses on pages 42 - 91.

4 Apprenticeships

An Apprenticeship is a real job with training that gives you the opportunity to gain a recognised qualification as you work. If you are passionate about the type of industry you want to work in, an Apprenticeship offers a clearly defined career route.

We work with a variety of different employers, ranging from small to large who offer great opportunities to 'earn while you learn'.

Apprenticeships are for anyone aged 16 or over and they allow you to earn and learn at the same time, meaning you have great prospects for the future!

We offer various levels of Apprenticeship from Level 2 right through to Level 5 Higher Apprenticeships (degree level). After completing your apprenticeship, you can progress to a higher-level Apprenticeship or one of the many university-level courses across our Colleges, into employment or on to university elsewhere.

Learn more about our Apprenticeships on pages 92 - 95.

5 Foundation Learning

A mix of vocational study, tasters and English and maths, for those who would like to learn core skills and develop their personal and social development to prepare you for employment and building confidence in the workplace.

Find out more about our Foundation Learning courses on pages 70 - 71.

Your Study Programme



Coming to College is more than just a course. Get the most out of your time at College with a study programme supported by Student Central.

Support

You'll have personal and group tutorials (called Goals) with your tutors, as well as further support from our highly skilled and dedicated team as needed.

Work Experience Placements

Every student at College has the opportunity to undertake meaningful work experience activities during their time at College.

NAVIGATE

Activities and experiences to develop skills through trips, visits, guest speakers, volunteering, enrichment, clubs and societies.

English & Maths

You'll continue to study English and Maths until you achieve a Grade (between GCSE and 9-4). This will be timetabled to fit in alongside your course.

Course Levels Explained

Students starting at Selby College after leaving school will be able to study a range of courses from Entry Level up to Level 3 depending on their qualifications, with the option to progress to a degree-level course (Levels 4, 5 & 6) at our University Centre, head to university, or progress into employment.

Level	Duration	What it means
Entry Level	Up to 1 Year	No formal entry requirements for these programmes, which are designed to provide you with essential life and study skills. Following successful completion of an Entry Level programme, learners can progress on to a Level 1 course.
Level 1	1 Year	You will need to have gained Grades 1 and 2 in your GCSEs to study a Level 1 programme. These will build on your existing skills and upon successful completion, allow you to progress to a Level 2 course.
Level 2	1 or 2 Years	Equivalent to GCSE Grades 4-9 and you will be expected to have achieved at least four GCSEs at Grade 3 or above to enrol on to one of these programmes. Successful completion will pave the way for you to further your studies at Level 3.
Level 3	1 or 2 Years	You will need to have achieved at least five GCSE passes at Grade 4 or above to enrol, plus any specific entry requirements for individual courses. These courses vary in length, usually from 1-2 years depending on the programme.

Still unsure on which path is right for you?

Our team of expert Careers and Guidance Advisers will be able to support you to make your decision. When you have your interview they, alongside our experienced teaching staff, will discuss the best route for you based on your qualifications, expected grades and career goals. If you have any questions, please don't hesitate to contact studentcentral@heartofyorkshire.ac.uk or call us on 01757 211000.



Choosing your course and making an application

How to Apply

Making a decision...
Browse through the prospectus, come to one of our Open Events, and talk to your parents, friends, and teachers, about the courses you're interested in to help you decide what you want to study. If you are unsure what you would like to do, call us and ask for a careers appointment or call our Course Information Team who will be happy to help.

↓

Apply online
You apply online direct via the Selby College website - www.selby.ac.uk/apply

↓

Call our Course Information Team on **01924 789111** or email **courseinfo@heartofyorkshire.ac.uk** and we can email you an application form.

↓

You will be invited for an interview for your first choice course only. This is your chance to ask questions about your chosen course and make sure the course is right for you.

↓

Congrats! You receive an offer in writing.
Whether you applied online or by form, you will need to accept the place by returning the acceptance form that came with your offer letter or call the Admissions Team on **01757 211133**.

↓

Attend a New Student Day event in July to participate in course related activities, meet other students and find out what College life is like.

↓

We will invite you into College to enrol for your chosen course in August, where you will become a full-time student.

Getting to College is easy!

Transport Routes

Alongside Arriva bus services, the College also provides its own transport to and from the College which students can express their interest to use.

This map shows our current bus services to and from Selby College:

If you cannot see the service on the map which is suitable for you, please visit the Arriva website or contact Student Central for advice on **01757 211040** or email **studentcentral@heartofyorkshire.ac.uk**

Once you have applied to Selby College, we will send you details of how to get a bus pass, where your nearest pick up point is and answer any questions you may have. You may be eligible for financial support which can help cover the cost of your travel to and from College.

Alongside our excellent transport links, we also have ample parking on-site. Student permits can be obtained at a very low cost for the whole academic year.



More than just the classroom!

Enriching Your Experience



We make our courses varied and interesting by packing in extra features like guest speakers, visits, and residential opportunities or overseas trips. Getting involved in extra activities can really boost your UCAS application to make you stand out from the crowd!



1. Law & Criminology students enjoyed a whistle-stop tour of London!

2. Public Services students braved some difficult weather conditions to climb Pen-y-ghent.

3. Hospitality & Catering students delivered a cookery demo at a local food festival.

4. Our Sport department celebrated success at their annual awards ceremony.

5. Science students took part in a cancer research practical at the University of York.

6. Yorkshire Sculpture Park was a hit with Art & Design students.

7. Construction students excelled at the Guild-of-Bricklayers' Yorkshire Region 2023 competition.

8. Business students raised over £650 for dog charities with fundraisers.

9. Pizza, fun activities and networking, were on the agenda for the Annual Student Rep conference!

If you enjoy sport, we have lots of opportunities here at Selby College...

Sport Enrichment



Our enrichment activities are available to all students and are a great way to try new activities, develop skills and meet new people. You don't need to be on a Sport course to take part in our sport enrichment, so come and join in!

Teams

Teams and clubs include Football, Rugby, Netball, Basketball, Dodgeball, Indoor Cricket, Orienteering, Volleyball, Table Tennis and even Zorb Football! These activities are available during lunch and some compete in AoC League matches every Wednesday afternoon. Students also have an opportunity to represent the College at the regional and national championships in the sports mentioned above as well as Badminton and running.

Regional championships include competitions against other colleges within the county of Yorkshire and the Humber, while at the National Championships, we compete against other colleges within England.



Football

Students have the opportunity to play for the Men's First or Second Football Team or the Women's Team. The Men's First Team, who were league champions in 2021/2022, play in the Association of College's (AoC) Yorkshire & Humber Men's League and have represented the area at the National Championships.

The Second Team were also champions of the English Colleges Football Association's (ECFA) Yorkshire & Humberside (West C) league in 2022/2023. The Women's Team play weekly fixtures in the ECFA Yorkshire and Humber League (West League). In 2022, the College's Men's 1st Football team won the AoC's Yorkshire Men's Football East A League after going undefeated throughout the season.



Selby Football Development Centre

The Selby College Football Development Centre (FDC) provides a platform for players who have previously been involved with professional clubs, as well

as those who have yet to be given the opportunity to showcase their sporting talents. With links to local professional and semi-professional clubs, students will have the opportunity to play at the highest level.

Training is incorporated into the study programme each week. Additionally, sports science support is provided alongside the pitch-based sessions.



Sport Awards

The Sport Awards celebrate the successes of our sports teams and individual students from across the academic year. The Awards include a formal three-course meal before the presentation of the Awards.



Sport Activators

Students can apply for a number of sport activator roles, including:

- + ECFA Activator
- + Inclusion Ambassador
- + This Girl Can Ambassador
- + Mental Health Ambassador

Students are appointed to help raise awareness of key issues and develop sport at the College and in the community. The Activators will help to arrange events and sessions to encourage new participants.

Students across the College are also encouraged to take part in the AoC's national challenges, which promote physical activity and the benefits of it. As part of the challenges, Colleges compete against each other to reach the total or engage the most students in either running, walking or cycling teams.

Tours of external sporting venues are also available to students, with students previously enjoying a tour of PSV Eindhoven.

Please contact the Sport Development Officer on **01757 211025** or email **info@heartofyorkshire.ac.uk** for more information about joining a team or to enquire about coaching dates.



Student Central

Supporting Your Success



Feel Safe, Be Safe

You can talk to us about anything... **Bullying, harassment, violent or coercive relationship, abuse, drugs, home issues, homelessness, sexual harassment or violence, exploitation, mental health.** We're here to help and support you.

Safeguarding Support

If you feel unsafe in any way you can tell a member of staff, call in to see staff in **Student Central**, or contact our **Group Safeguarding Lead** or **Deputy Safeguarding Lead**.



Young Adult Carers

If you are caring for a family member at home, our **Carer Lead** can work with you to make adjustments to support you in College to ensure you succeed with us.



Student Wellbeing Officers

If you feel overwhelmed either at College or by problems at home or you just need some support, whatever the reason, our **Student Wellbeing Officers** are here for you. Our team work closely with students and other services both in College and outside of College. The team can support via 1:1s, small groups, corridor chats and a variety of other drop-in opportunities, such as Wellbeing Wednesday, time to talk cafés, C-Card registrations and more.

Financial Support

We can provide information and confidential advice on student financial support in Further and Higher Education. This includes information on the **16-18 Bursaries**, **Discretionary learner support** (for students aged 19+ including childcare costs), **Advanced Learner Loans** and **Bursaries**, **Care to Learn** and **free College meals**.



Student Experience Support Leaders

We're here to see that you adapt well to College life and receive the support that you need to make the most of your studies. If you have any questions, queries or would like to speak to someone about anything to do with your time at College, you can contact one of our **Support Leaders**.

Attendance Matters

We expect **100% attendance** to all lessons on your timetable and this will give you the biggest chance of success on your course. You can check your attendance through ProMonitor, and if you have any queries or need any support this can be raised with our attendance team in **Student Central**.



Careers Information & Guidance

For advice on courses and/or your future options the Careers Information and Guidance team is available to support you.

Pathways

Helping students see the link between courses and careers.



Activity Leaders

During your time at College you will get the chance to take part in enrichment activities and we have lots that you can get involved in. Our **activity leaders** organise clubs, social trips and visits as well as supporting the **Students' Union**. Take advantage of your timetable-free Wednesday afternoons!

Student Voice Council

Each group at College has a class rep so that your voice is always heard and your opinions shared. If you're a class rep, you'll be a member of the student voice council (SVC) and will meet regularly with staff to help inform change and improve things for students.

Students' Union (SU)

As a student at College you're automatically a member of the Students' Union. Democratic elections are held annually for an executive committee of students. Any student can apply. Save money on the high street by buying a Totum Card at: cards.nusextra.co.uk



Google Classroom

Google Classroom has lots of help, support and advice which you can access remotely. You will be given the code for this Classroom during your first week at College.

Volunteering

Do you want the opportunity to develop key skills, become a leader, or work with other students or young people? We have lots of volunteering opportunities available so please contact your activity leader!



NAVIGATE

Navigate is a programme of events and activities to develop your wider and employability skills. You'll get a programme for the year during induction and additional activities and reminders will be advertised on a weekly basis. For more information come and speak to us in Student Central.



Sports Activator

Our Sports Activator organises the extra-curricular sports and activities across all campuses, alongside offering you advice regarding any volunteering, coaching, and training opportunities in sport.

Work Experience

Every student will take part in work experience activities through visits to workplaces, guest speakers, social action projects, work readiness activity and through a work placement. Plan for your work placement by asking friends and family, contact employers with your CV and speak to our Work Placement Co-ordinator for more advice.



First-rate Facilities

Realistic working environments and much more!



1. **Jubilee Building** includes main reception, training Restaurant, Aspire Hair & Beauty salon, sports hall, gym, Higher Education study area, Student Central, refectory, science labs and coffee shop, which proudly serves Starbucks coffee.
2. **Academy Building** includes Sixth Form centre, Learning Resource Centre, Achieve, Celebrate and Excel (ACE) centre and the ICT and Computing department.
3. **Aspiration Building** includes Construction department.
4. **Bricklaying Workshop.**
5. **Sport Pitches.**
6. **Sports Pavilion.**

7. **Renaissance Building** includes the Art, Design, Photography and Media centre, and Health and Social Care department.
8. **Engineering Building** includes Engineering, Institute of Technology and brand-new state-of-the-art Decarbonisation Labs.



Your insight into the workplace

Work Placements



Work experience is a great way to build your skills and to try out a certain role or career before you embark on it.

A work placement also enables you to get hands-on experience in the workplace, helping to prepare you for your next steps once you have left college.

Work placements can be carried out throughout the academic year as an extended placement which runs alongside your course, block placements of 1-2 weeks or during non-term time hours or as a commissioned

project – meaning they can be fit around your studies.

Contact the Work Placements team on **01757 211000** or email **workplacements@heartofyorkshire.ac.uk**



With the help of the work experience team, I applied to take part in the NHS work placement where I was able to learn and gain insight from nurses and doctors who are working on the frontline. This was a great opportunity to learn first-hand about the different roles within the NHS and the type of work that is carried out day-to-day."

Aimee
Level 3 Health and Social Care student

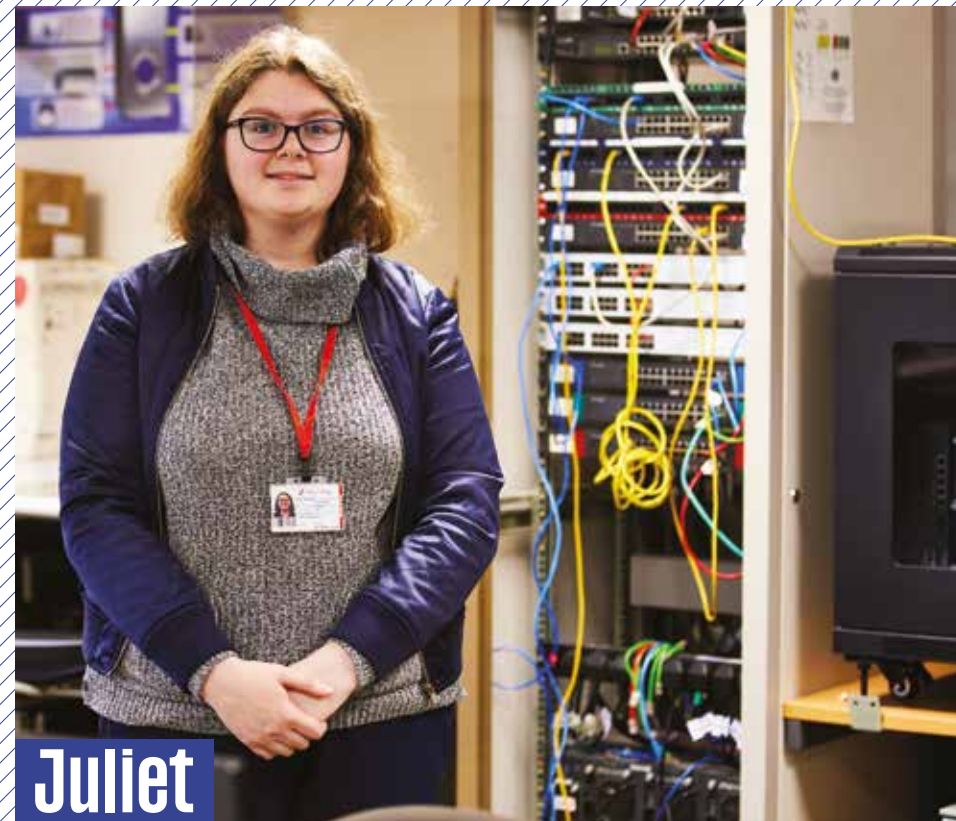
Our Work Placements Team is here to support you in finding work experience which is right for you.

The Work Placements Team will:

- + Inform you of placement and Apprenticeship opportunities
- + Speak to employers on your behalf and set up interviews with them
- + Prepare you for your placement and support you while you're there
- + Make sure that you are in a safe and positive environment
- + Review your placement with you, your employer and your tutor

Many employers treat a placement like work, so you will need to be prepared to:

- + Research your chosen career
- + Create a CV and prepare yourself for interviews
- + Contact local employers about placement vacancies and pass the information on to the Work Placements Team
- + Undertake a work readiness assessment and attend workshops
- + Be prepared to undertake your placement outside of the days you are in College
- + Be punctual and keen to learn new skills
- + Keep a log and complete a relevant piece of coursework while on placement
- + Complete an agreed placement of a minimum of 36 hours



Juliet



I really enjoyed taking part in Arm's technology work experience day and being able to interact with such knowledgeable people in the technology sector. It was incredibly inspiring to hear all about the history of the company and the exciting work they are doing. They also gave us advice about the skills and characteristics that employers look for, which was really valuable.

Taking part in the programme has given me a taste of what it's like to work in the field of technology and has further encouraged me to pursue a career in the sector once I have finished in education."

Juliet
Computer Science student at Selby College who completed a work placement with Arm, a global semiconductor and software design company.

Get a degree level qualification at the **Heart of Yorkshire Education Group**

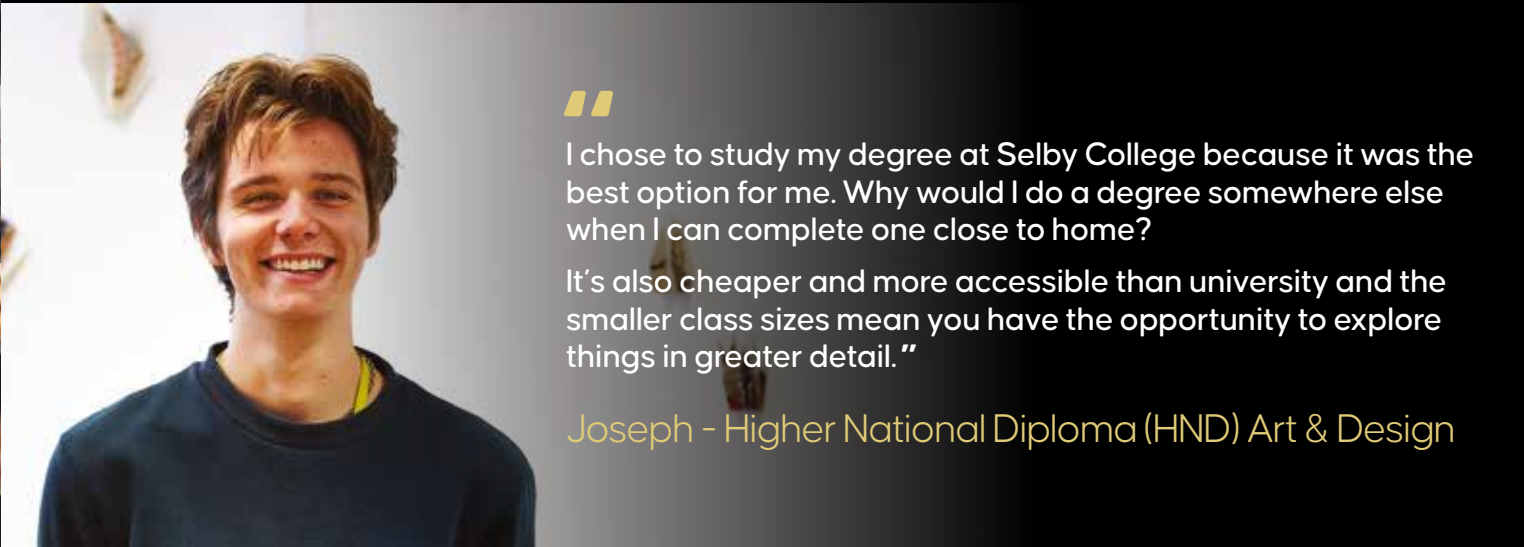
Rethinking
University
Education

Why study with the University Centre at Heart of Yorkshire Education Group?

- Our degrees are validated by some of the region's most well-established universities
- Over 92% of students positive about teaching and support (National Student Survey 2023)
- Our fees are lower than most universities
- Our small class sizes mean you'll get exceptional support and 1:1 time with your tutor
- Our full and part-time study options mean you can fit studies around your existing commitments
- We have multiple bursaries and scholarships available, based on individual circumstances

As the courses we offer each academic year vary, please check our website or get in touch for the most up-to-date information: visit heartofyorkshire.ac.uk/HE to find out more

Course Area	Castleford	Selby	Wakefield
Animal Management			✓
Art, Design & Photography		✓	✓
Business & Management		✓	✓
Childcare, Early Years & Childhood Studies		✓	✓
Computing		✓	✓
Construction	✓		
Engineering	✓	✓	
Health, Social Care & Wellbeing		✓	✓
Media, Film & Television			✓
Music			✓
Performing Arts			✓
Public Services		✓	✓
Science			✓
Social Sciences		✓	✓
Sport		✓	✓
Teacher Training		✓	✓



“ I chose to study my degree at Selby College because it was the best option for me. Why would I do a degree somewhere else when I can complete one close to home?
It’s also cheaper and more accessible than university and the smaller class sizes mean you have the opportunity to explore things in greater detail.”
Joseph - Higher National Diploma (HND) Art & Design

Your route to achieving excellence

Sixth Form



At Selby College, we are dedicated to preparing our students for their future and helping them achieve their goals.

Whether you want to go to the best university, find your dream career or progress to further levels of study, we can help you.

If you have a real interest in your subjects, enjoy studying, are able to work independently and thrive in examinations, then one of our A Level programmes could be the perfect option for you.

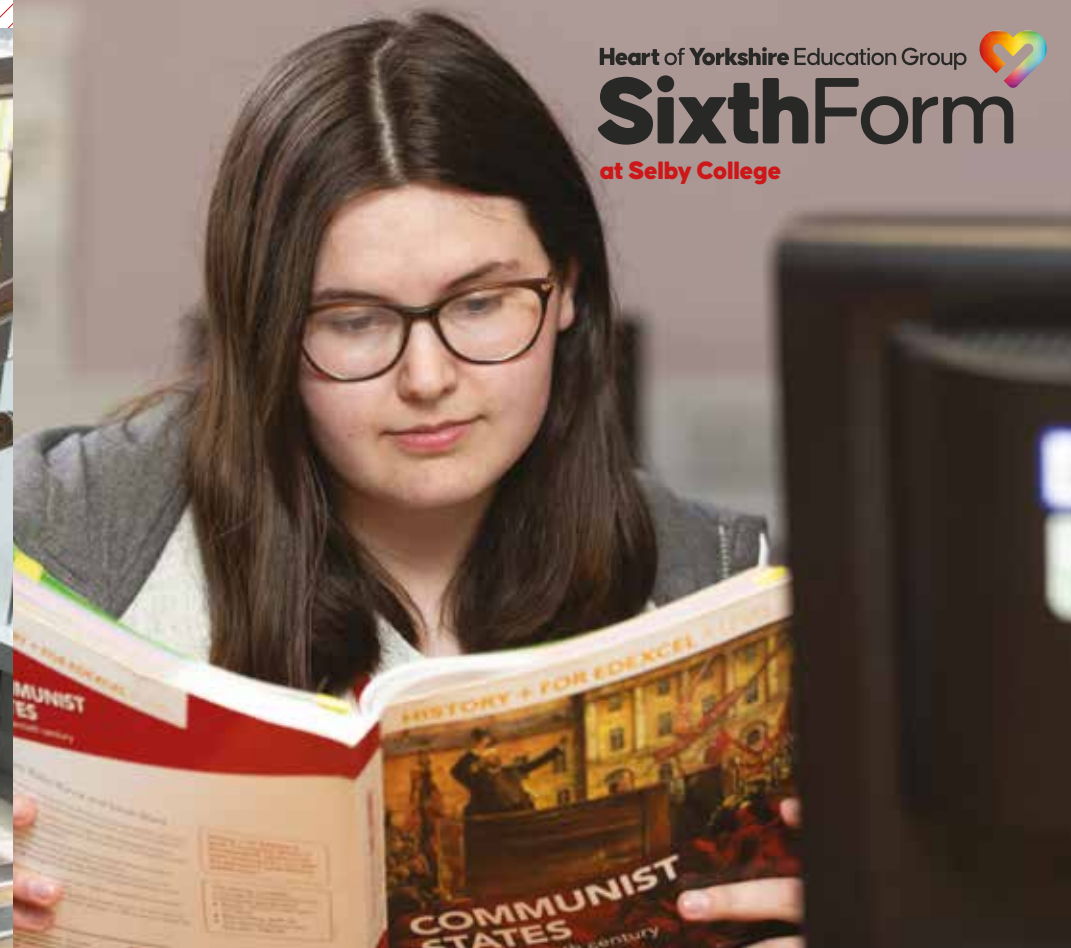
Our Sixth Form centre is home to a wide range of A Level courses which are focused on facilitating subjects to ensure you can progress onto your chosen university or even the workplace.

Art & Design, Biology, Business Studies, Criminology, English, Law and Psychology are just some of the programmes we offer, enabling you to study your favourite subjects at an even greater depth.

We hope you enjoy finding out more about our first-class A Level offer at Selby College.

If you are unsure about which A Level course is right for you in helping you achieve your aspirations, contact our friendly and supportive team who will be able to help you choose which options are best for you.

Heart of Yorkshire Education Group
SixthForm
at Selby College



Sixth Form Facilities

Our A Level curriculum is mostly delivered in our Sixth Form Building, which has dedicated classrooms and spaces for learners, with the Jubilee Building housing specialised science laboratories, sports facilities and further social spaces.



I chose Sociology as I wanted to learn about structures of society and sociological concepts. I'm most looking forward to the crime and deviance module, understanding what motivates people to commit crimes."

Tait
A Level Sociology student



I picked Selby College as I'd heard great feedback from past and current students. I always received lots of support from my tutors and there were extra lessons and support available if needed."

Lewis
A Level Maths, Further Maths, Chemistry student

A Level Success

We're placed in the top 25% of A Level providers in the country, based on our A Level Performance Systems (ALPS) Quality Indicator score. Analysis revealed that 49% of our teaching is marked as red (nine subjects), which means it exceeds the top 25% of the national benchmark.



99.4%

This year's A Level pass rate was an amazing 99.4%.



9

A Level subjects achieved a 100% pass rate, another fantastic year.



44%

44% of all A Level results were high grades (A* - B).



Students secured places at some of Britain's top Universities, including the University of Cambridge and the University of Sheffield.



“

I had fantastic tutors who helped me get the offer from Cambridge, including one who set up practice interviews for me. They also really helped me prepare for the exams.”

Alexus

A Level Maths, Further Maths, Physics and Geography student



“

I really enjoyed the structure of the learning at Selby College – it was more independent than high school and I really liked the campus.”

Juliet

A Level Maths, Further Maths, Computer Science and Geography student

“

The best thing about my time at Selby College was my tutors – they were all very supportive and helped when needed. I always received great support and advice from my tutors, and I am incredibly grateful for that.”

Ruby

A Level Psychology, Criminology and English Language student

Mentoring for Excellence

Our Mentoring for Excellence programme has helped many of our students achieve places at Britain's top universities, including Durham University, the University of Edinburgh and the University of Oxford.



As part of the programme, we provide students with:

- + Additional support to ensure you are aware of the opportunities available to you.
- + Links with some of the UK's best universities.
- + Summer schools, work experience and mentoring to support your UCAS statement.
- + The chance to take an additional subject to A Level and study for an EPQ to develop your academic skills.
- + Opportunity to attend enrichment activities, including debates, current affairs, political and economic awareness and intellectual and academic development.

Progression

We provide excellent careers and next steps support, including work experience and other enrichment opportunities, as well as activities in College and visits further afield. We strongly believe in preparing students for their future, which means not only making sure they know the right answers but also ask the right questions.



We want our students to be independent, to think for themselves; ensuring when they strive for a particular degree course or job, they have all the necessary skills and confidence to achieve their goals.

In addition to our considerable links with different universities, we also offer other opportunities to progress, including a range of Higher Education courses and Apprenticeship routes with local and regional employers, here at College..

SIXTH FORM COURSES

Art, Design & Photography

LEVEL	DURATION	WHAT YOU'LL STUDY	ENTRY REQUIREMENTS	AWARDING BODY
A Level Art & Design (Photography & Art)				
3	Two years	Topics studied can include: <ul style="list-style-type: none">· Portraiture· Still life· Product photography· Experimental imagery· Multimedia· Photographic and art installations· Moving image (video, film and animation)	5 GCSEs at Grade 9-4, including English Language OR Literature and Maths. AND Grade 5 or above in an art-based subject (if studied at GCSE).	AQA

FUTURE CAREERS

Source: Pathways

Graphic Designer	£17,480	»	£37,640
Games Developer	£19,000	»	£70,000
	Starter		Experienced

SIXTH FORM COURSES

Computing

LEVEL	DURATION	WHAT YOU'LL STUDY	ENTRY REQUIREMENTS	AWARDING BODY
A Level Computer Science				
3	Two years	Topics studied can include: <ul style="list-style-type: none">· Fundamentals of programming· Fundamentals of data structures· Fundamentals of algorithms· Theory of computation· Fundamentals of data representation· Fundamentals of computer systems· Fundamentals of computer organisation and architecture· Consequences of uses of computing· Fundamentals of communication and networking· Fundamentals of databases· Big data· Fundamentals of functional programming· Systematic approach to problem solving· Non-exam assessment - the computing practical project	5 GCSEs at Grade 9-4, including English Language and a Grade 6 in Maths.	AQA

FUTURE CAREERS

Source: Pathways

Network Technician	£23,400	»	£55,120
IT Manager	£27,040	»	£63,960
IT Technician	£21,840	»	£44,200
	Starter		Experienced

Business & Management

LEVEL	DURATION	WHAT YOU'LL STUDY	ENTRY REQUIREMENTS	AWARDING BODY
A Level Business				
3	Two years	Topics studied can include: <ul style="list-style-type: none">· Marketing and people· Managing business activities· Business decisions and strategy· Global business	5 GCSEs at Grade 9-4, including English Language and a Grade 5 in Maths.	Pearson Edexcel

FUTURE CAREERS

Source: Pathways

Business Manager	£19,410	»	£41,800
Business Analyst	£27,510	»	£59,260
	Starter		Experienced



“I chose this course because I enjoy Computer Science. I particularly like the programming side of the course I find it challenging which helps push me to do my best.”

Juliet
A Level Computer Science student

English & Humanities

Teacher	£25,580	»	£55,090
Writer	£17,310	»	£37,290
Solicitor	£29,870	»	£64,340
	Starter		Experienced

LEVEL	DURATION	WHAT YOU'LL STUDY	ENTRY REQUIREMENTS	AWARDING BODY
A Level English Language				AQA
3	Two years	Topics studied can include: <ul style="list-style-type: none">• Textual variation and representation• Language and gender• Language relating to occupation, region, social groups and ethnicity• Child language acquisition• Language change and world Englishes	5 GCSEs at Grade 9-4, including English Language and Maths. AND Grade 5 in English Language.	
A Level English Literature				AQA
3	Two years	You will also study poetry, prose and drama under the broad topic 'Aspects of Tragedy'. This includes a Shakespeare play, as well as a variety of reading from different time periods and perspectives. In the second year of the course, you will look at the impact of social and political protest writing, working with unseen texts as well as a range of texts from the 1800s to the 2000s.	5 GCSEs at Grade 9-4 including English Language and Maths. PLUS Grade 5 in English Literature.	
A Level Geography				Eduqas (WJEC)
3	Two years	Year 1 of the course consists of four main areas: <ul style="list-style-type: none">• Tectonic processes and hazards• Landscape systems, processes and change• Globalisation• Shaping places Year 2 of the course covers: <ul style="list-style-type: none">• The water cycle and water insecurity• The carbon cycle and energy security• Superpowers• Health and human rights	5 GCSEs at Grade 9-4 including English Language and Maths. PLUS Grade 5 in Maths and Science.	

LEVEL	DURATION	WHAT YOU'LL STUDY	ENTRY REQUIREMENTS	AWARDING BODY
A Level History				AQA
3	Two years	Topics studied can include: <ul style="list-style-type: none">• Tudors: England, 1485-1603• How effectively did the Tudors restore and develop the powers of the monarchy?• The Cold War 1945-1991• Independent historical enquiry	5 GCSEs Grade 9-4 including English Language and Maths. AND Grade 5 in English Language or Literature.	
A Level Law				OCR
3	Two years	You will learn about aspects of criminal law, for example assault, homicide, defences and the property crimes of theft, burglary and robbery. You will also study aspects of civil law including negligence, vicarious liability and nuisance. You also study Human Rights law.	5 GCSEs at Grade 9-4 including English Language and Maths. AND Grade 5 in English Language or Literature.	



“I really enjoyed the social side of college and making new friends. My tutors were great at giving advice and always being on hand.”

Emily
A Level Psychology, Criminology and English Language student

SIXTH FORM COURSES

Film, Media & Television

FUTURE CAREERS

Source: Pathways

Film/Video Editor	£21,000 » £35,000
Lighting Technician	£26,000 » £37,000
	<small>Starter Experienced</small>

LEVEL	DURATION	WHAT YOU'LL STUDY	ENTRY REQUIREMENTS	AWARDING BODY
A Level Media Studies				Eduqas (WJEC)
3	Two years	<p>Learners will work from the product outwards to debate key critical questions related to the social, cultural, political and economic role of the media.</p> <p>Through studying media products holistically in relation to all areas of the theoretical framework, learners will engage with the dynamic relationships between media products, media industries and audiences.</p> <p>Learners will also consider established media forms alongside more contemporary forms, developing an awareness of emerging and evolving media.</p>	5 GCSEs at Grade 9-4, including English Language and Maths.	





SIXTH FORM COURSES

Maths

FUTURE CAREERS

Source: Pathways

Statistician

£27,440 » £59,1100
Starter Experienced

LEVEL	DURATION	WHAT YOU'LL STUDY	ENTRY REQUIREMENTS	AWARDING BODY
A Level Mathematics				EdExcel
3	Two years	A Level Maths is divided into two areas; core and applied. Core Maths builds upon your knowledge from GCSE in topics such as algebra, coordinate geometry and trigonometry. It also introduces many new areas such as calculus (differentiation and integration) and series.	5 GCSEs at Grade 9-4, including English Language and a Grade 6 in Maths.	
A Level Further Mathematics				OCR
3	Two years	This Further Mathematics course consists of pure maths alongside optional topics from mechanics, statistics or discrete mathematics.	5 GCSEs at Grade 9-4 including English Language and Grade 8 in Maths. PLUS Must be studied alongside A Level Maths.	
Certificate in Core Maths				AQA
3	One year	Core Maths has been designed to maintain and develop real-life maths skills. What you study is not purely theoretical or abstract; it can be applied on a day-to-day basis in work, study or life and will include financial and statistical elements.	This is a one year course which is taught in conjunction with three A Level subjects.	

Biologist	£21,130	»	£45,520
Physical Scientists	£28,000	»	£60,320
	<small>Starter</small>		<small>Experienced</small>

LEVEL DURATION WHAT YOU'LL STUDY ENTRY REQUIREMENTS AWARDING BODY

A Level Biology AQA

3	Two years	Topics studied can include: <ul style="list-style-type: none">· Biological molecules· Cells· Organisms exchange substances with their environment· Genetic information, variation and relationships between organisms· Energy transfers in and between organisms· Organisms respond to changes in their internal and external environments· Genetics, populations, evolution and ecosystems· The control of gene expression	5 GCSEs at Grade 9-4 including English Language and Grade 6 in Maths. AND Dual Science at Grade 6/6. Separate sciences, Grade 6 in Biology.
---	-----------	---	--

A Level Chemistry AQA

3	Two years	The course covers the following topics: <ul style="list-style-type: none">· Organic· Inorganic· Physical· Analytical chemistry	5 GCSEs at Grade 9-4 including English Language and Grade 6 in Maths. AND Dual Science at Grade 6/6. Separate sciences, Grade 6 in Chemistry.
---	-----------	--	--

LEVEL DURATION WHAT YOU'LL STUDY ENTRY REQUIREMENTS AWARDING BODY

A Level Physics AQA

3	Two years	Topics studied can include: <ul style="list-style-type: none">· Measurements and their errors· Particles, quantum phenomena and electricity· Mechanics, materials and waves· Fields and their consequences and nuclear physics· Further mechanics and thermal physics	GCSEs at grade 9-4 including English Language and Grade 6 in Maths. AND Dual Science at Grade 6/6. Separate sciences, Grade 6 in Physics. Must study A Level Maths alongside.
---	-----------	--	---



“I’ve been working hard for seven years to be able to study Medicine at university. The College has been amazing at helping me get into university and provided me with lots of support with my application.”

Emma
A Level Biology, Chemistry and Mathematics student



“I chose this course because I find Physics interesting, it’s fun and it relates to the real world. I’d eventually like to work as a school teacher, but would like to study Physics at university.”

Ebony
Level 3 Physics student

SIXTH FORM COURSES

Social Sciences

FUTURE CAREERS

Source: Pathways

Psychologist
Social Worker

£24,190 » £52,110
£23,840 » £51,350
Starter Experienced

LEVEL	DURATION	WHAT YOU'LL STUDY	ENTRY REQUIREMENTS	AWARDING BODY
Applied Criminology				
3	Two years	Topics studied can include: <ul style="list-style-type: none">· Changing awareness of crime· Criminological theories· Crime scene to courtroom· What safeguards are in place to ensure a fair trial?· Crime and punishment	5 GCSEs at Grade 9-4 including English Language and Maths.	WJEC
A Level Psychology				
3	Two years	Topics studied can include: <ul style="list-style-type: none">· Approaches in psychology· Research methods· Social influence· Biopsychology· Psychopathology· Memory and attachment	5 GCSEs at Grade 9-4, including English Language and Maths. AND Grade 5 in Maths and Science.	AQA
A Level Sociology				
3	Two years	Topics studied can include: <ul style="list-style-type: none">· Education with theory and methods· Family and households· Beliefs in society· Crime and deviance with theory and methods	5 GCSEs at Grade 9-4 including English Language and Maths. AND Grade 5 in English Language or Literature.	AQA
Applied Psychology				
3	Two years	Topics studied can include: <ul style="list-style-type: none">· Psychological approaches and applications· Conducting research· Health psychology· Psychopathology	5 GCSEs at Grade 9-4 including English Language and Maths.	Pearson

SIXTH FORM COURSES

Sport

FUTURE CAREERS

Source: Pathways

Fitness Instructor
Sports Coach

£10,040 » £17,410
£11,570 » £20,060
Starter Experienced

LEVEL	DURATION	WHAT YOU'LL STUDY	ENTRY REQUIREMENTS	AWARDING BODY
Applied Sport & Exercise Science				
3	Two years	You will study a variety of areas, including: <ul style="list-style-type: none">· Functional anatomy· Applied sport and exercise psychology· Coaching for performance and fitness <p>You will also study one of the following units:</p> <ul style="list-style-type: none">· Biomechanics in sport and exercise science· Specialised fitness training· Physical activity for individual and group-based exercise	5 GCSEs at Grade 9-4 including English Language and Maths.	BTEC



I had regular one-to-ones with my tutors to ensure I was on track with my studies and could progress onto my next steps."

Max
A Level History, Sociology and Business student



I would not change my time at college! I would like to become either a Lawyer, Solicitor or Barrister in the future. I'm hoping University will help me choose which!"

Tilly
A Level Criminology, History and English Language student



I always get lots of support from all my tutors – I can ask questions and get advice."

Elle
A Level Sociology, Maths and English Language student

Your chance to take it to the nexT Level

T Levels



T Levels are high-quality technical alternatives to A Levels that combine classroom theory, practical learning and a work placement.

T Levels have been developed in collaboration with businesses to equip you with the knowledge and skills to meet the needs of the industry.

The two-year courses are designed to prepare students for work by including a mixture of classroom learning and on-the-job experience as part of an Industry Placement.

T Levels will follow GCSEs and are equivalent to three A Levels. Whether you are hoping to gain the knowledge and experience to open doors into further study, skilled employment or a Higher Apprenticeship, Selby College's range of T Level courses can help to prepare you for your next step.

“

Studying a T Level is helping me to build my confidence and experience in working with others, as well as teaching me observational skills.”

Layla
T Level Student

T-LEVELS

THE NEXT LEVEL QUALIFICATION

Key points:

- Equivalent to 3 A Levels
- 80% Classroom
- 20% Industry Placement
- Gain UCAS points to progress to university

TAKE
YOUR
FUTURE
TO
THE
NEXT
LEVEL

Is a T Level the right path for me?

T Levels are ideal if you have completed your GCSEs and want to get the knowledge and experience needed to get a skilled job. They are two-year courses designed to give you a head start towards the future you want.

Will they be recognised by employers?

T Levels are designed with businesses and employers to make sure you have the skills and knowledge they are looking for in an employee.

How long is the Industry Placement?

An Industry Placement lasts around 45 days, undertaken as a block or as individual days. The specific length of the placement and when it will take place will differ depending on your T Level.

Why would I choose an unpaid T Level over a paid apprenticeship?

T Levels give you the opportunity to experience an industry while you continue your studies, with the opportunity to specialise later.

While gaining practical experience, you also achieve the qualifications needed to move into a higher level of study, if you choose to later. Apprenticeships are paid, work-based training for those who know what occupation they want to pursue.

What can I do after completing a T Level?

T Levels get you work ready so that you are able to successfully progress onto a skilled profession. You can also continue studying with a Higher Apprenticeship or degree.

If you would like to speak to one of our advisers to find out if a T Level course is right for you, please call **01924 789789** or email courseinfo@heartofyorkshire.ac.uk.

“

What I really enjoy about doing a T Level is that you can apply the knowledge that you learn in the classroom in your industry placement.”

Hollie
T Level Student

The Next Level Qualification



LEVEL	DURATION	WHAT YOU'LL STUDY	ENTRY REQUIREMENTS	AWARDING BODY
T Level Building Services Engineering for Construction - Electrotechnical Engineering (Electrical Installation)				
3	Two years	Topics studied can include: <ul style="list-style-type: none">· Health and safety· Installation methods and termination of connections· Systems and products used in electrotechnical engineering· Analysing and using information to and from electrotechnical systems· Removal processes as part of system decommissioning	5 GCSEs Grades 9 – 6 including English, Maths and Science.	City & Guilds
T Level Building Services Engineering for Construction - Electrotechnical Engineering (Plumbing and Heating Installation)				
3	Two years	Topics studied can include: <ul style="list-style-type: none">· Health and safety· Installation methods and plumbing and heating systems· Systems tools and products used in plumbing and heating engineering· Analysing and using information to and from plumbing and heating systems· Removal processes as part of system decommissioning	5 GCSEs Grades 9 – 6 including English, Maths and Science.	City & Guilds
T Level Digital (Digital Support Services)				
3	Two years	Topics studied can include: <ul style="list-style-type: none">· Understanding the business environment· Ethical and moral issues raised by our interactions with technology, and the cultural impact technology has on businesses and society· A varied range of concepts around the digital support services roles including data and digital analysis, digital environments, legislation, project planning, security, testing and digital tools	5 GCSEs Grade 9-5 including English and Maths.	NCFE

LEVEL	DURATION	WHAT YOU'LL STUDY	ENTRY REQUIREMENTS	AWARDING BODY
T Level Education & Early Years				
3	Two years	Topics studied can include: <ul style="list-style-type: none">· Wider context· Supporting education· Safeguarding, health and safety and wellbeing· Behaviour· Parents, families and carers· Working with others· Child development· Observation and assessment· Reflective practice· Equality and diversity· Special educational needs and disability· English as an additional language	5 GCSEs Grade 9-4 including English and Maths.	NCFE
T Level Health				
3	Two years	Topics studied can include: <ul style="list-style-type: none">· Working within the health and science sector· Health, safety and environmental regulations· Managing information and data· Principles of good scientific and clinical practice· Core science concepts including the structure of cells, tissues and large molecules, genetics, microbiology and immunology	5 GCSEs Grade 9-4 including English, Maths and Science.	NCFE

Vocational Courses



If you have a specific career in mind, prefer a practical way of learning or prefer assignments over exams, our wide range of vocational courses are the perfect option for you.

Vocational courses are designed to provide you with the practical skills and the underpinning knowledge needed for a specific job or career.

This can prepare you to work in a trade, in a craft, as a technician or in support roles in professions such as engineering, accountancy, nursing, medicine, architecture or law.

They are also more likely to have a more immediate effect on your job prospects as you will be able to demonstrate to future employers that you possess the skills relevant to vacancies they have.

Progression

Choosing a vocational course can provide you with the experience and skills you need to enter a specific

industry or trade. You can also progress on to a higher-degree level course at the University Centre at the Heart of Yorkshire Education Group or a university once you have completed your Level 3 vocational qualifications.

Engineering Workshops



Construction Workshops



Professional Kitchens



Hair Salons



Photography Studios



Sports Hall & Pitches



Sport Labs



First class facilities

Our state-of-the-art facilities enable students to gain experience in real working environments with excellent equipment. All of our buildings are fully-equipped to ensure you have the facilities you need to help you succeed.



I have always enjoyed cooking. My course allows me to do this whilst learning in both a practical and hands-on fashion and will help me in my goal of becoming a chef."

Phattaradanai

Professional Cookery student

The benefits of choosing a vocational course:

- 1 You can take a vocational programme at a level that is right for you
- 2 An extended diploma is equivalent to 3 A Levels
- 3 You can study a vocational course regardless of the grades you left school with
- 4 You can develop your practical skills at College and in the workplace
- 5 Vocational courses allow a learner to gain a qualification through a combination of assessed work and via exams
- 6 You will be more confident about your skills and ability to do a specific job
- 7 Most vocational courses will give you the chance to get relevant experience in a work placement



The best part of this course is that we are able to learn on industry-standard equipment, which has prepared me to enter employment and means I can get a step ahead of my competition."

Jess

Engineering student

Animal Care

Animal care is a diverse industry and this course provides the opportunity to work with and care for a range of animals.



Scan the QR code for more information on Animal Care courses.

With 46% of households owning a pet, and a rise in the number of people visiting zoos and wildlife parks, there are many job prospects for those with the right qualifications.

Our land-based studies course is delivered by experienced practitioners who have years of experience. Students benefit from work placements with local pet shops, animal sanctuaries and farms.

Jobs available within the sector include Animal Care Worker, Biologist, Countryside Ranger, Kennel Worker, Veterinary Nurse and Zoologist.

FUTURE CAREERS Source: Pathways

Veterinary Nurse	
£15,380	» £26,650
Animal Care Services Occupations	
£14,010	» £24,290
<small>Starter</small>	<small>Experienced</small>

LEVEL	DURATION	WHAT YOU'LL STUDY	ENTRY REQUIREMENTS	AWARDING BODY
Introductory Diploma in Land-based Studies			Pearson BTEC	
1	One year	Topics studied can include: <ul style="list-style-type: none">· Being organised· Developing a personal progression plan· Working with others· Researching a topic· Caring for and feeding animals· Moving and accommodating animals· Maintain the health of animals· Growing plants· Keeping plants healthy· Develop estate maintenance skills	No formal entry requirements, but an interest in the land-based sector and working outdoors is essential.	

VOCATIONAL COURSES

Art, Design & Photography

Whether you want to be behind the camera, working with technology or creating fine art, we have a course that's right for you.

“Art interested me at school so it seemed natural to follow it on once I got to College. My main focus is illustrations, but the College has given me the opportunity to explore different ways to make art and they have plenty of materials and media to help with this.”

AI
Art, Design & Photography student



Scan the QR code for more information on Art, Design & Photography courses.

We offer high-quality courses across a range of subjects including photography, graphic design, fashion, art and textiles.

As well as organising an end of year department show, Art & Design students also have the opportunity to go on trips and visits to:

- Yorkshire Sculpture Park
- Leeds Art Gallery
- The Hepworth Wakefield
- York Art Gallery
- The Knitting & Stitching Show
- Aesthetica Short Film Festival

FUTURE CAREERS Source: Pathways

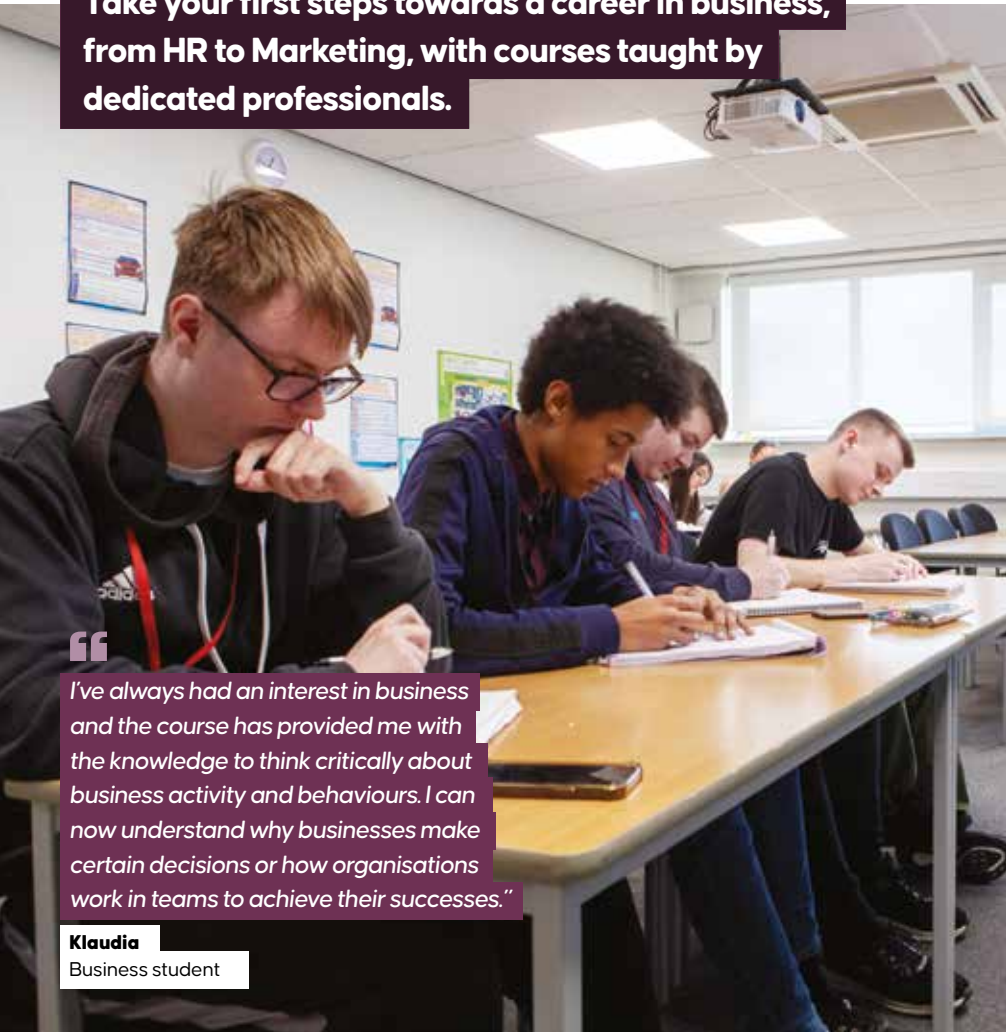
Graphic Designer	£17,480	»	£37,640
Photographer	£15,430	»	£33,220
Textile Designer	£14,300	»	£30,800
	Starter		Experienced

LEVEL	DURATION	WHAT YOU'LL STUDY	ENTRY REQUIREMENTS	AWARDING BODY
Art, Design & Media			UAL (University of Arts London)	
1	One year	Topics studied can include: <ul style="list-style-type: none">· Exploratory drawing and mark making· Ideas generation· Printmaking· Surface pattern· 3D material exploration· Time-based media· Communication skills	No formal qualifications required.	
Art & Design			UAL (University of Arts London)	
2	Two years	Topics studied can include: <ul style="list-style-type: none">· Lens-based media and photography· Digital illustration· Fine art, printmaking and sculpture· 3D design· Textiles and surface pattern· Graphic communications· Media production and digital editing processes	Standard Level 2 entry requirements apply - the minimum requirement is at least four GCSEs at Grade 3, one of which will be in English or Maths. Neither English nor Maths will be below Grade 2. At least 2 GCSE subjects at Grade 3 are required alongside GCSE equivalent qualifications.	
Art & Design			BTEC	
3	Two years	<p>The first year is about gaining confidence and a greater understanding of your ideas, skills and motivation, so you will be ready to apply your expertise and focus your work on a chosen area of specialisation in year two.</p> <p>In the second year we aim for students to demonstrate far more autonomy and independence as they respond to self-led projects. You will find it really motivating when you start to work on your own personal ideas.</p> <p>Throughout both years, you will look at the work of all kinds of other artists, designers and makers to support the development of your own work. You will be expected to complete independent study outside of studio hours to support your creative progression and this will usually involve a combination of practical work, research and the development of your ongoing sketchbooks.</p>	<p>Standard Level 3 vocational entry requirements apply - the minimum requirement is at least five GCSEs at Grade 4 OR at least 3 GCSE subjects at Grade 4 alongside alternative GCSE equivalent requirements. At least one of Maths or English Language must be at Grade 4 and neither lower than Grade 3.</p> <p>For this course, you will be expected to have a GCSE at Grade 4 or above in Art & Design or similar. If this is not the case, you can still arrange for an interview where you can showcase a portfolio of your artwork.</p>	

VOCATIONAL COURSES

Business & Management

Take your first steps towards a career in business, from HR to Marketing, with courses taught by dedicated professionals.



“I’ve always had an interest in business and the course has provided me with the knowledge to think critically about business activity and behaviours. I can now understand why businesses make certain decisions or how organisations work in teams to achieve their successes.”

Klaudia
Business student



Scan the QR code for more information on Business & Management courses.

Previous business students had the chance to visit New York for a week, enjoying a trip of a lifetime! They visited iconic buildings and sights, where they learned about the rich history of the city. The trip provided insight into New York’s business scene, with visits to Wall Street and a business talk at Macy’s.

Other trips included:

- Landrover Jaguar
- Wimbledon
- Flamingo Land

A Apprenticeships Available

FUTURE CAREERS Source: Pathways

Business Associate Professionals	
£16,510	» £35,550
Marketing Associate Professionals	
£17,980	» £38,730
Office Supervisors	
£17,240	» £37,140
Starter	Experienced

LEVEL	DURATION	WHAT YOU'LL STUDY	ENTRY REQUIREMENTS	AWARDING BODY
Business				NCFE
1	One year	Four core units: <ul style="list-style-type: none">• Being organised• Developing a personal progression plan• Working with others• Researching a topic	Minimum of 3 GCSEs at Grade 9-1.	
Business				NCFE
2	One year	Six units covering topics such as: <ul style="list-style-type: none">• Business culture and responsibilities• Customer service in business• Running a project• Innovation in a business environment• Managing performance in a business• Changes in the business environment	Minimum 5 GCSEs at Grade 9-3. OR Level 1 qualification, plus Level 1 in English or Maths.	
Business				Pearson BTEC
3	Two years	Topics studied can include: Year 1 <ul style="list-style-type: none">• Exploring businesses• Developing a marketing campaign• Managing a business event• Personal and business finance Plus options in customer service and recruitment and selection. Year 2 <ul style="list-style-type: none">• International business• Principles of management• Business decision making• Work experience in business Plus two further optional units.	5 GCSEs at Grade 9-4, including English and Maths. OR 5 GCSEs at Grade 9-4 and Level 2 in either English or Maths. OR Level 2 qualification with Merit Grade, plus Level 2 English and Maths.	

Childcare, Early Years & Childhood Studies

Childcare is forecast to be one of the top five occupations in the UK; our courses provide you with the skills and knowledge for your future career in this exciting sector.



Scan the QR code for more information on Childcare, Early Years & Childhood Studies courses.

Many families rely on professional childcare to help balance work and family responsibilities, which makes childcare a growing sector with many opportunities.

The department has close connections with local schools and local and national health care providers, creating fantastic placement opportunities for students.

Our childcare courses have been developed by experienced professionals and will help you to enjoy a rewarding career working with children.

A

Apprenticeships Available

T

T Level Available

FUTURE CAREERS		Source: Pathways
Childcare Assistants		
£11,940	»	£20,700
Educational Support Assistants		
£10,460	»	£18,120
Teaching Assistants		
£10,540	»	£18,270
Starter		Experienced



LEVEL DURATION WHAT YOU'LL STUDY			ENTRY REQUIREMENTS	AWARDING BODY
Caring for Children				NCFE CACHE
1	One year	Topics studied can include: <ul style="list-style-type: none">Sharing learning experiences with childrenHealth and safety with young childrenUnderstanding learning and development through playGrowth and development of young childrenSafeguarding children and young people	No formal entry requirements.	
Early Years Practitioner				NCFE CACHE
2	One year	Topics studied can include: <ul style="list-style-type: none">Introducing the role of the early years practitionerLegislation, framework and professional practicePlay, development and learning for school readinessProfessional development	4 GCSEs Grade 9-3, including English or Maths.	
T For the Level 3 course in this area please visit the T Level section on page 41.				



I've got three sisters so I really enjoy caring for young people. I'm most looking forward to learning about potential careers after this course."

Madison
Childcare student

Computing

Technology is everywhere and it's not going away!
Gain the skills required for this in-demand sector with
our IT courses.



Scan the QR code for
more information on
Computing courses.



“I chose this course because I have a keen interest in IT and knew that it would give me a set of valuable skills. The course has opened my horizons to a variety of different possibilities for IT job roles.”

Bethany
Computing student

Information Technology is a common feature in all our lives and studying this subject with us will prepare you for a range of exciting opportunities in this sector.

You can study with us right through to degree-level, but you could also aim for the following careers:

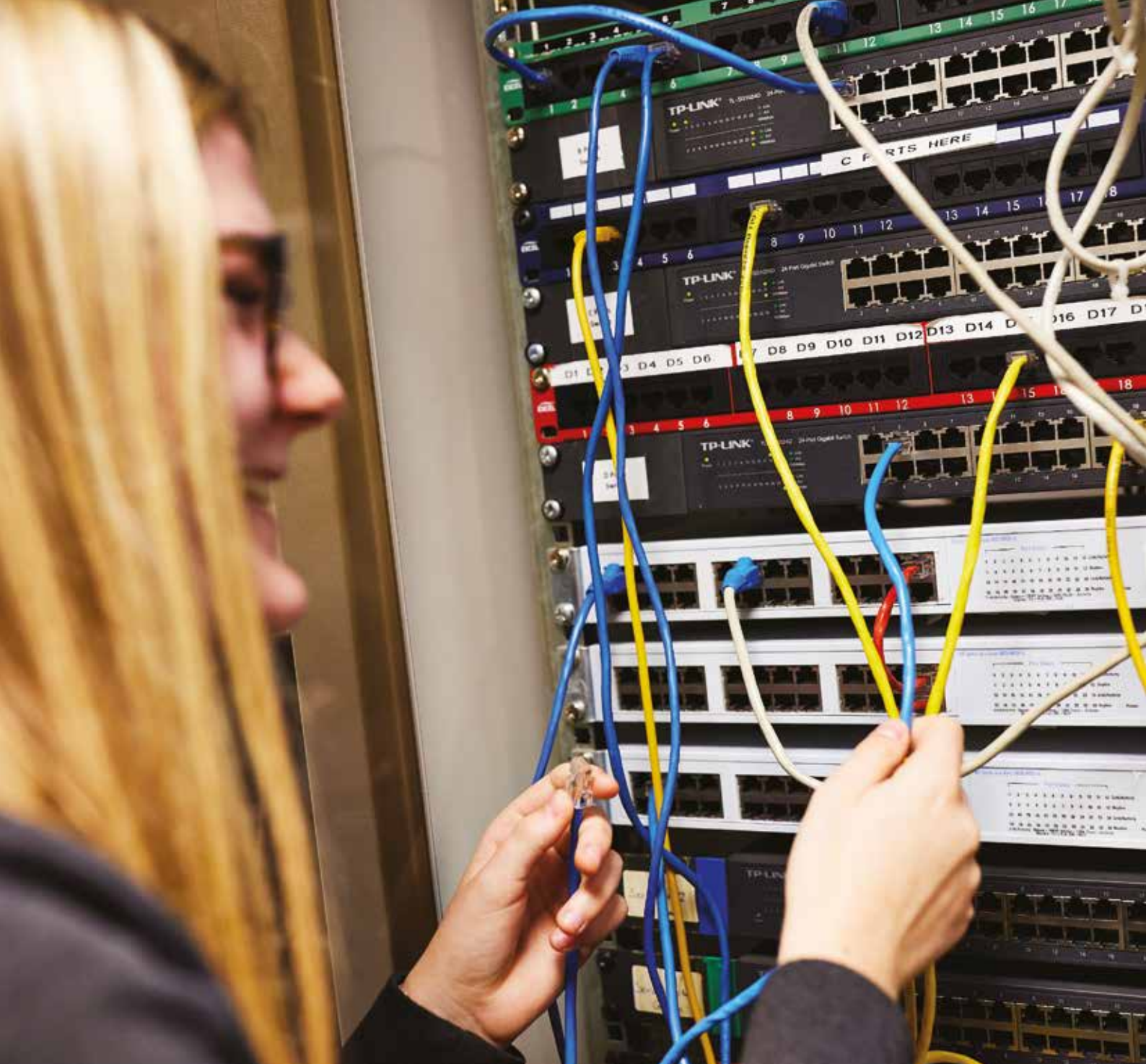
- IT Manager
- IT Security Specialist
- Mobile App Developer
- Network Architect
- Robotics Engineer
- Video Game Designer
- Web Developer

T T Level
Available

FUTURE CAREERS Source: Pathways

Data Analysts	£19,940	»	£42,950
Cybersecurity Professionals	£29,340	»	£63,200
Software Developer	£28,960	»	£62,380
Starter			Experienced

LEVEL	DURATION	WHAT YOU'LL STUDY	ENTRY REQUIREMENTS	AWARDING BODY
Computing & Digital Design			UAL (University of Arts London)	
1	One year	Topics studied can include: <ul style="list-style-type: none">· Research and design processes in IT· Using databases to communicate· Using Excel to communicate· Web development· Using 3D animation multimedia to solve problems· Using 2D graphics multimedia to solve problems· Using multimedia to solve problems· Final major project	3 GCSEs at Grade 9-1, including English and Maths. OR Relevant Entry Level 3 at Merit Grade plus English and Maths at a minimum of Entry Level 3.	
Computing & IT			Pearson BTEC	
2	One year	Topics studied can include: <ul style="list-style-type: none">· The online world· Technology systems· A digital portfolio· Software development· Spreadsheet development· Database development· Website development· Computer system support in practice	4 or 5 GCSEs at Grade 9-3, including English and Maths. OR Relevant Level 1 qualification at Merit Grade plus English and Maths at a minimum of Level 1.	



Software Development & Cybersecurity			Pearson BTEC	
--------------------------------------	--	--	--------------	--

3	Two years	<p>Topics studied can include:</p> <ul style="list-style-type: none">• Programming languages: Java, Python, C# and more• Software development methodologies: Agile, Waterfall and more• Cybersecurity concepts: malware, phishing, social engineering and more• Web development• Mobile development• Network security• Information security• Data handling, analysis and presentation• Problem-solving• Communication	5 GCSEs at Grade 9-4, including English or Maths. OR Relevant Level 2 at Merit Grade, plus English and Maths at a minimum of Level 2.
---	-----------	---	---

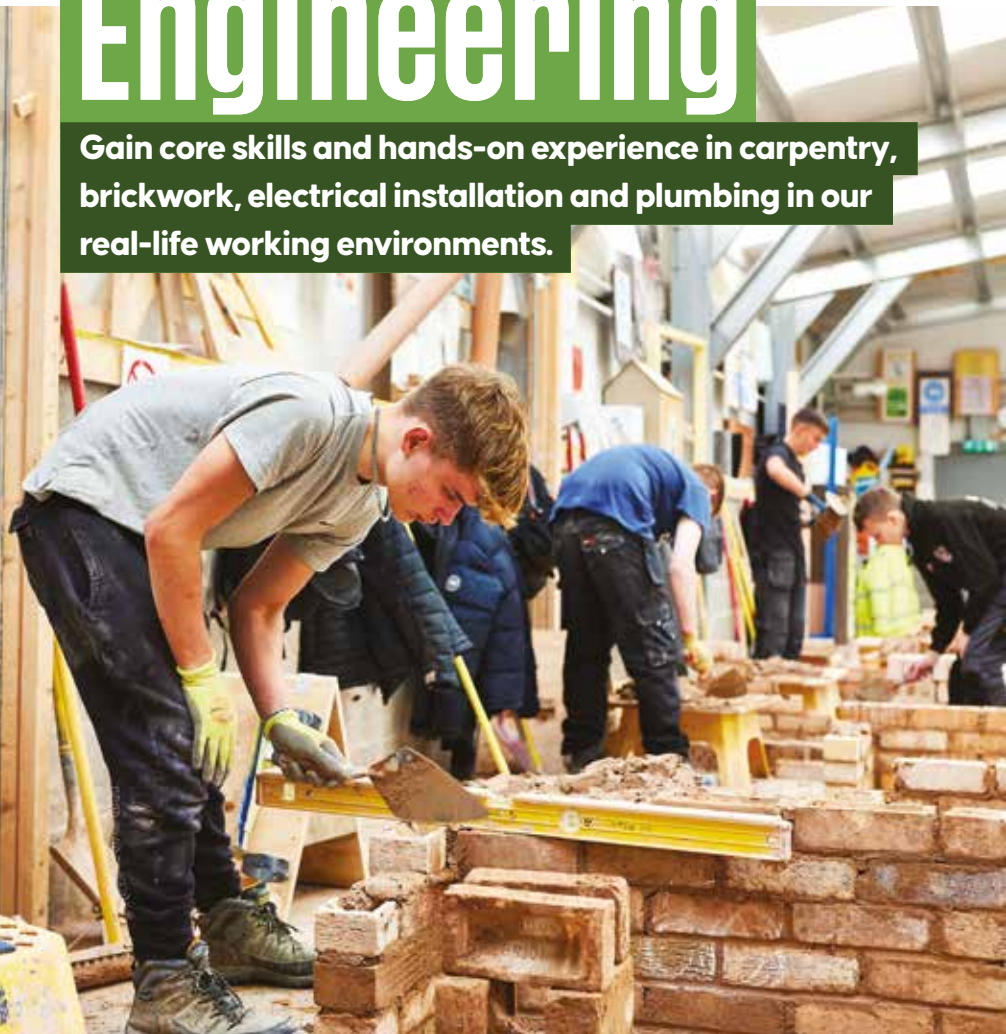
Digital Infrastructure & Networking			Pearson BTEC	
-------------------------------------	--	--	--------------	--

3	Two years	<p>The course will teach you the skills you need to succeed in this rapidly growing field. You will learn about the principles of digital infrastructure and networking, as well as the practical skills needed to design, install, and maintain digital networks.</p> <p>You will also have the opportunity to specialise in one or more areas of digital infrastructure and networking, such as cloud computing, data centre operations, or network security.</p> <p>Topics studied can include:</p> <ul style="list-style-type: none">• Digital infrastructure• Network security• Cloud computing• Data centre operations	5 GCSEs at Grade 9-4, including English or Maths. OR Relevant Level 2 at Merit Grade, plus English and maths at a minimum of Level 2.
---	-----------	--	---

T T Level in Digital (Digital Support Services) also available - see page 40.

Construction & Civil Engineering

Gain core skills and hands-on experience in carpentry, brickwork, electrical installation and plumbing in our real-life working environments.



Scan the QR code for more information on Construction courses.

Traditional disciplines like carpentry, joinery and plumbing remain core skills, but technology has become important too, and our construction students can be found using computers as often as hammers or trowels!

We have live working environments and workshops so that you can learn the hands-on, practical skills.

A

Apprenticeships Available

T

T Level Available

FUTURE CAREERS		Source: Pathways
Carpenters & Joiners	£18,490 » £39,820	
Construction & Building Trades	£17,920 » £38,600	
Electricians & Electrical Fitters	£21,290 » £45,860	
Plumbers & Heating Installers	£21,370 » £46,030	
Starter	Experienced	

LEVEL DURATION WHAT YOU'LL STUDY			ENTRY REQUIREMENTS	AWARDING BODY
Construction Multiskills				NOCN
1	One year	Topics studied can include: <ul style="list-style-type: none">Principles of constructionHow to work safely in a construction environmentDeveloping practical skills	3 GCSEs at Grade 9-2. All learners will be required to complete a BKSB assessment.	
Bricklaying				NOCN
1	One year	Topics studied can include: <ul style="list-style-type: none">How to work safely in a construction environmentThe impact construction has on the environmentAn awareness of digital technologies for the construction sectorHow to set out building worksHow to build block wallsHow to build brick wallsHow to build cavity walls	3 GCSEs Grade 9-2, to include English and Maths.	
Carpentry & Joinery (Site Carpentry)				NOCN
1	One year	Topics studied can include: <ul style="list-style-type: none">Principles of constructionHow to construct framesHow to install skirting and architraveHow to hang a door	3 GCSEs at Grade 9-2, to include English and Maths.	
Electrical Installation				City & Guilds
1	One year	Topics studied can include: <ul style="list-style-type: none">Electrical principlesEnvironmental impact of electrical installationsHow to work safely in a construction environmentHow to install cables and equipmentHow to test and commission electrical installations	4 GCSEs at Grade 9-3.	

LEVEL	DURATION	WHAT YOU'LL STUDY	ENTRY REQUIREMENTS	AWARDING BODY
Plumbing				City & Guilds
1	One year	Topics studied can include: <ul style="list-style-type: none"> · Plumbing science · Environmental impact of plumbing installation · How to carry out cold water installations · How to carry out hot water installations · How to carry out drainage installations 	3 GCSEs at Grade 9-3, to include English and Maths.	
Construction Multiskills				NOCN
2	One year	Topics studied can include: <ul style="list-style-type: none"> · Principles of construction · How to work safely in a construction environment · How to carry out basic plumbing tasks · How to carry out basic trowel skills · How to carry out basic carpentry skills 	4 GCSEs at Grade 9-3. All learners will be required to complete a BKSb assessment.	
Bricklaying				NOCN
2	One year	Topics studied can include: <ul style="list-style-type: none"> · How to work safely in a construction environment · The impact construction has on the environment · An awareness of digital technologies for the Construction sector · How to set out building works · How to build block walls · How to build brick walls · How to build cavity walls 	4 GCSEs passes at Grade 9-4 to include English and Maths. Alternatively with a Level 1 Extended Certificate/Diploma in Bricklaying 3 GCSEs at Grade 9-3 to include English and Maths.	
Carpentry & Joinery				NOCN
2	One year	Topics studied can include: <ul style="list-style-type: none"> · Principles of construction · How to work safely in a construction environment · How to produce drawings and cutting lists · How to mark out and cut traditional joints · How to manufacture/fit windows and doors · How to manufacture staircases · How to set up and use a range of hand and power tools 	5 GCSEs at Grade 9-4 to include English and Maths. OR GCSE English and Maths at Grade 9-3 with Level 1 Diploma in Carpentry and Joinery. All learners will be required to complete a BKSb assessment.	





LEVEL	DURATION	WHAT YOU'LL STUDY	ENTRY REQUIREMENTS	AWARDING BODY
-------	----------	-------------------	--------------------	---------------

Electrical Installation				City & Guilds
--------------------------------	--	--	--	---------------

2	One year	Topics studied can include: <ul style="list-style-type: none"> · Electrical principles · Environmental impact of electrical installations · How to install cables and equipment · How to test and commission electrical installations · How to design electrical installations 	4 GCSEs at Grade 9-4 to include English and Maths.
---	----------	--	--

Plumbing				City & Guilds
-----------------	--	--	--	---------------

2	One year	Topics studied can include: <ul style="list-style-type: none"> · Principles of construction · How to construct frames · How to install skirting and architrave · How to construct a stud partition wall · How to construct a timber floor · How to hang a door · How to set up and use a range of hand and power tools 	4 GCSEs at Grade 9-4 to include English and Maths.
---	----------	--	--

Electrical Installations				City & Guilds
---------------------------------	--	--	--	---------------

3	One year	Topics studied can include: <ul style="list-style-type: none"> · Electrical principles · Environmental impact of electrical installations · How to install cables and equipment · How to test and commission electrical installations · How to design electrical installations 	4 GCSEs at Grade 9-4 to include English and Maths, with a Level 2 qualification in Electrical Installation/Engineering.
---	----------	--	---

T This course is also available as a T Level - see page 40.

Bricklaying				City & Guilds
--------------------	--	--	--	---------------

3	One year	Topics studied can include: <ul style="list-style-type: none"> · How to work safely in a construction environment · The impact construction has on the environment · An awareness of digital technologies for the sector · How to set out building works · How to build block walls, brick walls and cavity walls 	3 GCSEs at Grade 9-4 to include English and Maths with a Level 2 qualification in Bricklaying.
---	----------	---	--

LEVEL	DURATION	WHAT YOU'LL STUDY	ENTRY REQUIREMENTS	AWARDING BODY
Plumbing				City & Guilds
3	One year	Topics studied can include: <ul style="list-style-type: none"> · Plumbing science · Environmental impact of plumbing installation · How to carry out cold water installations · How to carry out hot water installations · How to carry out drainage installations 	3 GCSEs at Grade 9-4 to include English and Maths, with a Level 2 qualification in Plumbing.	
T This course is also available as a T Level - see page 40.				
Carpentry & Joinery (Architectural Joinery)				City & Guilds
3	One year	Topics studied can include: <ul style="list-style-type: none"> · Principles of construction · How to work safely in a construction environment · How to produce drawings and cutting lists · How to mark out and cut traditional joints · How to manufacture/fit windows and doors · How to manufacture staircases · How to set up and use a range of hand and power tools 	GCSE English and maths at Grade 9-4 with the Level 2 Technical Certificate/Diploma in Carpentry and Joinery.	
Carpentry & Joinery (Site Carpentry)				NOCN
3	One year	Topics studied can include: <ul style="list-style-type: none"> · Principles of construction · How to construct frames · How to install skirting and architrave · How to construct a stud partition wall · How to construct a timber floor · How to hang a door · How to set up and use a range of hand and power tools 	3 GCSEs at Grade 9-4 to include English and Maths, with a Level 2 qualification in Site Carpentry.	



“

My dream is to buy houses, do them up and rent them out, and the skills I'm learning on this course will be a big help with that. It's also helping in my forklift job outside College.”

Vasco
Bricklaying student

Engineering

We're at the forefront of delivering modern engineering courses with our exceptional facilities and strong links with industry.



Scan the QR code for more information on Engineering courses.

You'll benefit from the superbly-equipped workshops and specialist rooms at Selby College, learning practical skills like IT and CAD CAM, as well as mechanical engineering, engineering maintenance, electrical and electronic engineering, plant engineering, fabrication and welding.

A Apprenticeships Available

FUTURE CAREERS Source: Pathways

Electricians & Electrical Fitters	£21,290	»	£45,860
Engineering Professionals	£27,040	»	£58,240
Mechanical Engineers	£26,390	»	£56,840
	<small>Starter</small>		<small>Experienced</small>



“The best part of this course is that we are able to learn on industry-standard equipment, which has prepared me to enter employment and means I can get a step ahead of my competition.”

Jess
Engineering student

Engineering Operations (Skills)			EAL
---------------------------------	--	--	-----

2	Two years	What you will study: <ul style="list-style-type: none">· Complying with statutory regulations and organisational safety requirements· Working efficiently and effectively in advanced manufacturing and engineering· Using and communicating technical information· General welding applications· General machining, fitting and assembly applications· General electrical and electronic engineering applications	Standard Level 2 entry requirements apply – 4 GCSE passes at Grade 3, to include English, Maths and Science. At least 2 GCSE subjects at Grade 3 are required alongside alternative GCSE qualifications.
---	-----------	--	--

Engineering			EAL
-------------	--	--	-----

3	Two years	What you will study: Level 3 Diploma in Engineering Technologies <ul style="list-style-type: none">· Engineering and environmental health and safety· Engineering mathematics· Computer aided design· Electrical and electronic principles· General engineering maintenance techniques· Mechanical engineering principles· Engineering communications Level 3 Extended Diploma in Engineering Technologies (Progression Only) <ul style="list-style-type: none">· Further engineering science· Programmable logic controllers· Pattern development· Maintenance engineering principles· Maintenance of pneumatic systems and components· Engineering inspection and quality control· Advanced engineering project	You must have either successfully completed a Level 2 qualification within engineering or have 5 Grade 4s or higher, which must include Maths and English. Transfers to this course from other subject areas may be considered on a case by case basis.
---	-----------	---	--

English for Speakers of Other Languages (ESOL)

If your first language is not English, this course will give you an opportunity to improve your English skills.



This course will give students an opportunity to improve all aspects of their English including speaking, listening, reading and writing. Students will also have the opportunity to take maths, personal and social development and ICT skills alongside their English classes as well as developing employability skills.

“When I first came to college I was both scared and worried as it was going to be my first experience going to school in a different country. Choosing to start the ESOL course is one of the best decisions I have ever made. Not only did I learn a new language, I also met lots of amazing people and learned a lot about their countries.”

Zane
ESOL student

LEVEL	LOCATION	DURATION	WHAT YOU'LL STUDY	ENTRY REQUIREMENTS	AWARDING BODY
The ESOL 16-18 Study Programme (English for Speakers of Other Languages)				City & Guilds	
E1 E2 E3 L1 L2		36 weeks	<p>The ESOL 16-18 study programme course covers all aspects of the English Language, and you will study a range of interesting and engaging topics such as holidays and travel, education, hobbies and free time.</p> <p>You will also develop your skills in English grammar, vocabulary building, conversation, pronunciation, reading and writing through detailed practice.</p>	<p>No formal qualifications required but you should show you are prepared to give your full commitment to the course.</p> <p>You will have an initial ESOL assessment before you join the course to make sure you are put in the appropriate group at a level suitable for you.</p>	

“Ralfs joined the College when he was 16 and successfully completed a Level 1 ESOL qualification, a Level 2 Mathematics qualification and a Level 1 ICT qualification during his year on the course.”

ESOL tutor

Film, Media & Television

With consumers demanding a constant stream of high-quality content, media companies are investing in digital technologies and a skilled workforce.



Scan the QR code for more information on Film, Media & Television courses.

Some of the world’s most popular and best loved films, TV productions, animation and documentaries have been made here in the UK. Its reputation in film making, TV production, animation, and special effects is recognised globally.

The UK has a long and enviable history of producing global successes such as Planet Earth, Game of Thrones, Line of Duty, the Crown and Broadchurch.

The UK can also lay claim to cinematic masterpieces such as the Harry Potter films, the Bond series and Avengers: Infinity War.

FUTURE CAREERS Source: Pathways

Broadcasting Equipment Operators	
£15,430	£33,220
»	
Managers in the Creative Industries	
£26,110	£56,240
»	
Starter	Experienced

Creative Media Production & Technology UAL (University of Arts London)

3	Two years	<p>Topics studied can include:</p> <ul style="list-style-type: none">· Film making· Editing· Music video· Photography· Radio <p>In year 2 you will further develop your skills with more emphasis on you as the individual, developing your own ideas and career aspirations.</p>	<p>Standard Level 3 vocational entry requirements apply - the minimum requirement is at least five GCSEs at Grade 4 OR at least 3 GCSE subjects at Grade 4 alongside alternative GCSE equivalent requirements. At least one of Maths or English Language must be at Grade 4 and neither lower than Grade 3.</p> <p>If the subject applied for has been taken previously, then at least a Grade 4 at GCSE or Merit at BTEC or OCR Level 2 is required.</p>
---	-----------	--	---



Kizzy is a former Level 3 Media student of Selby College who was named the Association of College’s Young Student of the Year.

Kizzy is a keen poet and spoken word activist who aims to address the topics important to her generation through her writing. She was awarded the accolade for her commitment to raising awareness on issues such as disability and mental health.

Kizzy
Media student

Foundation Learning



Scan the QR code for more information on Foundation Learning courses.



A range of highly supported programmes designed to improve independence, confidence, personal and social skills, employability skills, Maths and English and Preparation for Adulthood.

The courses will prepare you for further study, progression on to our work-based learning programmes, such as supported internships, accessing the community and employment.

“

Having tasters in the course helped me to prepare for my future and to understand my passion and focus. My confidence came on leaps and bounds and is still growing. I initially found the course hard but my tutor was kind and patient with me and ensured that I was on the right course.”

Jonathan
Foundation Learning student

FLEX VOTE (Vocational Options, Tasters & Employability) (for students aged 16 -18 or 16 – 25 with an EHCP)

City & Guilds

E2 E3	Flexible (depending on progress)	Your programme of study will concentrate on improving and developing: <ul style="list-style-type: none">• Personal and social skills• Employability• Maths• English vocational options• Digital skills (E3 level)	No formal qualifications required as this course can accommodate and be tailored to suit your needs based on your current levels of English and Maths.
------------------	----------------------------------	--	--

Get SET - Employment Focused Study Programme

E1 E2 E3	One year	The programme will focus on developing your employability skills and ensuring you are confident about going into the workplace. You will continue to develop your English, Maths and IT skills.	No formal qualifications required but you must be motivated and have an aspiration to work. You must be able to travel independently or willing to develop your travel skills. You must be willing to work with employers and undertake a range of work-related tasks.
-------------------------	----------	--	--

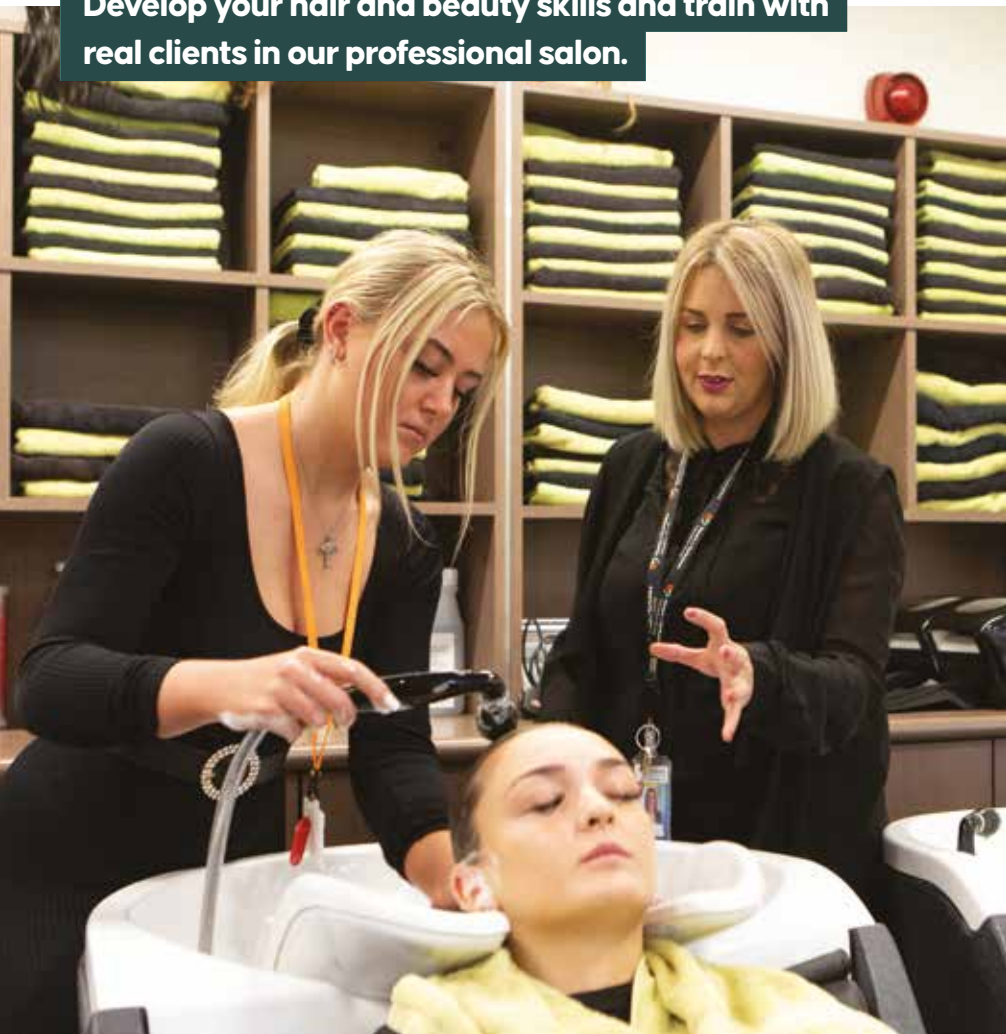
Project SEARCH (Supported Internship Programme)

	One year	Through a process of systematic instruction, you will learn the various skills you need to be able to carry out your job role. You will also develop safe working practice, communication skills and appropriate conduct at work.	No formal qualifications required but your place must be commissioned by the Local Authority. You must also be motivated and have an aspiration to work.
--	----------	---	--

VOCATIONAL COURSES

Hair & Beauty

Develop your hair and beauty skills and train with real clients in our professional salon.



Scan the QR code for more information on Hair & Beauty courses.

Study Hair and Beauty with us and show off your talents in our professional salon, **Aspire**.

Show off your customer service skills by providing hair and beauty services to paying members of the public.

We have an exciting range of additional activities including visits to trade exhibitions and the opportunity to get specialist training from external companies such as Goldwell and Joico, to name a few!

FUTURE CAREERS

Source: National Careers Service

Hairdressers		
£14,000	»	£30,000
Beauty Therapist		
£16,000	»	£25,000
<i>Starter</i>		<i>Experienced</i>

LEVEL	DURATION	WHAT YOU'LL STUDY	ENTRY REQUIREMENTS	AWARDING BODY
Hair & Beauty Skills				VTCT
1	One year	Topics studied can include: <ul style="list-style-type: none">• Face painting• Nail art• Skincare• Hand and nail care• Make-up application• Blow dry hair• Winding skills• Shampoo and condition hair• Plaiting hair• Colour hair using temporary hair colour	No formal qualifications required.	
Beauty Therapy				VTCT
2	One year	Topics studied can include: <ul style="list-style-type: none">• Health and safety• Customer care• Team building• Facials• Make-up• Manicure and pedicure• Waxing• Eyebrow shaping• Eyelash and eyebrow tinting• False eyelashes	Standard Level 2 entry requirements apply - the minimum requirement is at least four GCSEs at Grade 3, one of which will be in English or Maths. Neither English nor Maths will be below Grade 2. At least two GCSE subjects at Grade 3 are required alongside GCSE equivalent qualifications.	
Women's Hairdressing				VTCT
2	One year	Topics studied can include: <ul style="list-style-type: none">• Health and safety• Client consultation• Cutting• Colouring• Styling• Shampoo and condition• Plaiting and twisting	Standard Level 2 entry requirements apply - the minimum requirement is at least four GCSEs at Grade 3, one of which will be in English or Maths. Neither English nor Maths will be below Grade 2. At least two GCSE subjects at Grade 3 are required alongside GCSE equivalent qualifications.	



LEVEL	DURATION	WHAT YOU'LL STUDY	ENTRY REQUIREMENTS	AWARDING BODY
Hairdressing				VTCT
2	One year	Topics studied can include: <ul style="list-style-type: none">· Health and safety· Client consultation· Cutting· Colouring· Styling· Shampoo and condition· Plaiting and twisting	For this course you must have successfully completed the Level 2 VRQ Diploma in Women's Hairdressing.	
Beauty Therapy				VTCT
3	One year	Topics studied can include: <ul style="list-style-type: none">· Monitor procedures to safely control work operations· Contribute to the planning and implementation of promotional activities· Provide body massage treatments· Provide electrical facial treatments/electrical body· Provide Indian head massage treatments· Electrical epilation· Hot stone body massage <p>It should be noted that there is a large amount of science involved in this course.</p>	For this course you must have successfully completed the Level 2 NVQ Diploma in Beauty Therapy.	

VOCATIONAL COURSES

Health, Social Care & Wellbeing

Our courses are designed to give you the skills you'll need whether your aim is to work in a specialist facility such as a nursing home or within a home-based service.



“I can’t wait to start studying to be a mental health nurse. I’d like to thank my tutor for all her incredible support.”

Mollie
Health, Social Care & Wellbeing student



Scan the QR code for more information on Health, Social Care & Wellbeing courses.

The health and social care industry is one of the largest growing sectors in the world, but there is a shortage of skilled staff within the industry.

Working in the care sector will put you at the heart of your community. Our courses are designed to give you the skills you'll need whether your aim is to work in a specialist facility such as a nursing home or within a home-based service.

We’ve developed a range of courses at different levels to prepare you for a career in Health and Social Care.

A

Apprenticeships Available

T

T Level Available

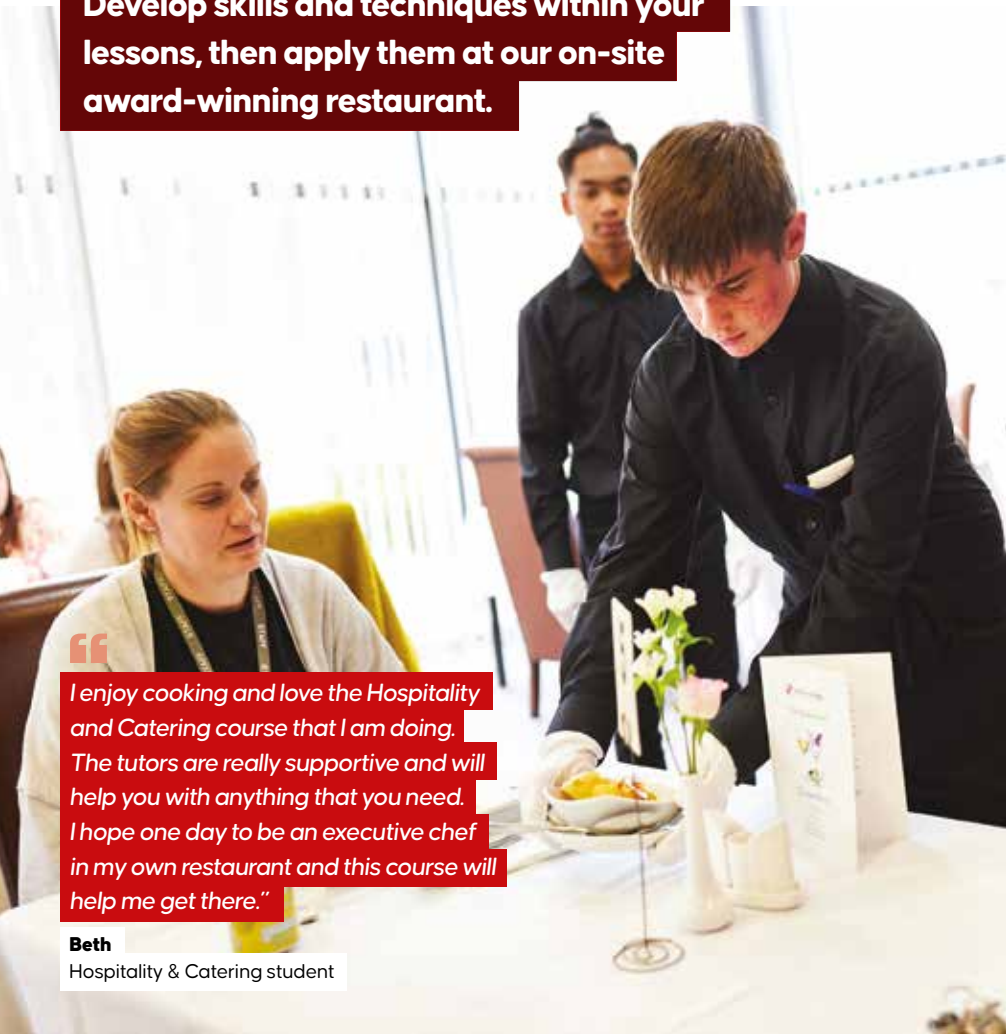
FUTURE CAREERS		Source: Pathways
Care Workers & Home Carers		
£12,430	»	£21,540
Social Workers		
£23,840	»	£51,350
Welfare Professionals		
£17,890	»	£38,520
Starter		Experienced

LEVEL	DURATION	WHAT YOU'LL STUDY	ENTRY REQUIREMENTS	AWARDING BODY
Introduction to Health & Social Care				CACHE
1	One year	Topics studied can include: <ul style="list-style-type: none">· Development through play· Equality and diversity· Safeguarding· Human growth and development· Effective communication	No formal qualifications required.	
Health & Social Care				CACHE
2	One year	Topics studied can include: <ul style="list-style-type: none">· Human growth and development· Working in health and social care· Communication in health and social care· You will also be expected to attend a work placement for which you must be prepared to travel	4 GCSEs Grade 9-3, including English or Maths.	
T For the Level 3 course in this area please visit the T Level section on page 41.				

VOCATIONAL COURSES

Hospitality & Catering

Develop skills and techniques within your lessons, then apply them at our on-site award-winning restaurant.



“I enjoy cooking and love the Hospitality and Catering course that I am doing. The tutors are really supportive and will help you with anything that you need. I hope one day to be an executive chef in my own restaurant and this course will help me get there.”

Beth
Hospitality & Catering student



Scan the QR code for more information on Hospitality & Catering courses.

The hospitality and catering industry is one of the largest growing sectors in the world.

Equipped with fully-functioning kitchens, restaurant and bar, you will learn and work within the College’s award winning Hospitality and Catering department. Students gain hands-on experience by preparing and serving a range of delicious dishes on the restaurant’s menu.

A Apprenticeships Available

FUTURE CAREERS Source: Pathways

Chefs		
£15,620	»	£27,070
Catering & Bar Managers		
£16,030	»	£27,780
<small>Starter</small>		<small>Experienced</small>

LEVEL	DURATION	WHAT YOU'LL STUDY	ENTRY REQUIREMENTS	AWARDING BODY
Culinary Skills			City & Guilds	
2	One year	Topics studied can include: <ul style="list-style-type: none">· Food safety· Developing skills for employment in catering and hospitality· Health and safety in catering and hospitality· Healthier foods and special diets· Prepare and cook stocks, soups and sauces· Prepare and cook fruit and vegetables· Prepare and cook meat and offal· Prepare and cook poultry· Prepare and cook fish and shellfish· Prepare and cook rice, pasta, grains and egg dishes· Produce hot and cold desserts and puddings· Food and beverage service skills	Minimum 4 GCSEs at Grade 9-3. OR Level 1 qualification in Hospitality and Level 1 in either English or Maths for progressing students.	
Advanced Professional Cookery Kitchen & Larder			City & Guilds	
3	One year	Topics studied can include: <ul style="list-style-type: none">· Food safety supervision· Supervisory skills in the hospitality industry· Exploring gastronomy· Advanced skills and techniques in producing· Meat and offal dishes· Poultry and game dishes· Fish and shellfish dishes· Vegetable and vegetarian dishes	4 GCSEs at Grade 9-3 AND Level 2 Certificate/ Diploma in Culinary Skills or equivalent plus English or Maths at Grade 3.	
Food & Beverage Service Supervision			City & Guilds	
3	One year	Topics studied can include: <ul style="list-style-type: none">· Food safety supervision· Supervising food and beverage services· Supervising customer service· Legislation in food and beverage service· Prepare and serve wine· Prepare and serve alcoholic and non-alcoholic beverages· Supervise events· Prepare and serve cocktails· Barista skills	4 GCSEs at Grade 9-3 AND Level 2 Certificate/ Diploma in Food & Beverage Service plus GCSE English or Maths at Grade 3.	

VOCATIONAL COURSES

Horticulture

Horticulture is an industry and a science; with a shortage of workers to look after public parks, gardens, nurseries and allotments, your new skillset will be invaluable.



“

I don't particularly enjoy being in the classroom so this course was ideal for me. It can be a lot of hard work in the winter but it's really good and you meet some great people.”

Jason
Horticulture student



Scan the QR code for more information on Horticulture courses.

Enjoy working outside rather than in a classroom? Prefer practical tasks to exams? Then a Land-based course could be for you.

Working in a realistic working environment, you will complete the tasks you need to gain a qualification in Land-based Studies. You will work in small groups on projects to develop and maintain a large garden area.

Working in a team you will build confidence, social skills, ability to work independently and use a wide range of tools.

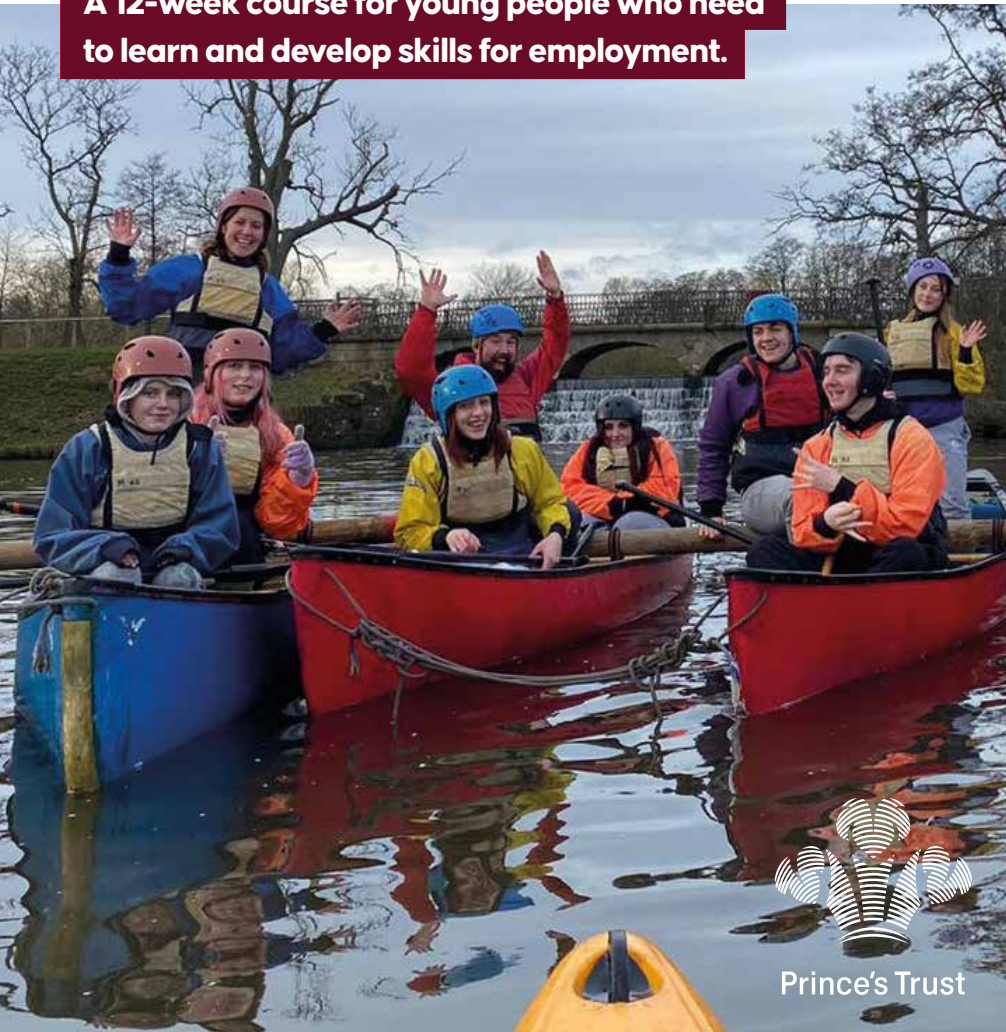
FUTURE CAREERS Source: Pathways

Forestry & Related Workers		
£15,180	»	£32,700
Gardeners & Landscape Gardeners		
£14,670	»	£31,600
Groundsmen & Greenkeepers		
£16,050	»	£27,820
<small>Starter</small>		<small>Experienced</small>

LEVEL	LOCATION	DURATION	WHAT YOU'LL STUDY	ENTRY REQUIREMENTS	AWARDING BODY
Introductory Diploma in Land-based Studies					Pearson
1	One year	Topics studied can include: <ul style="list-style-type: none">· Being organised· Developing a personal progression plan· Working with others· Researching a topic· Caring for and feeding animals· Moving and accommodating animals· Maintain the health of animals· Growing plants· Keeping plants healthy· Develop estate maintenance skills			No formal entry requirements, but an interest in the land-based sector and working outdoors is essential.

The Prince's Trust

A 12-week course for young people who need to learn and develop skills for employment.



The Prince's Trust aims to:

- Allow learners to learn, develop and practise the skills required for employment
- Prepare learners for further education programmes, apprenticeships and other work-based learning
- Provide valuable work experience
- Provide learners with opportunities to develop their English and maths skills



The Prince's Trust programme can help young people build confidence, improve communication and develop teamwork skills. Students also have the opportunity to go on work experience, plan a community project and go on residential.

Selina
The Prince's Trust Team Leader

The Prince's Trust Team Programme - Certificate in Employment, Teamwork and Community Skills				The Prince's Trust	
---	--	--	--	--------------------	--

E3 L1 L2	12 weeks	<p>Day 1: Meet new people Don't worry about turning up on your own – there'll be about 12 people joining and everyone will be in the same situation. It will be informal and there'll be plenty of activities so you'll soon feel part of things.</p> <p>Week 1: Take action Over this week, you'll start planning for the weeks ahead – setting out what you want to achieve and finding out how to get your qualifications. You'll also be planning for a week away.</p> <p>Week 2: New experiences You'll spend this week away on residential, trying new things and learning how to work with others. This gives you a chance to break away from your current situation. The sort of things you could do include canoeing, climbing, raft-building and much more!</p> <p>Weeks 3-6: Something to talk about As a team, you'll decide on a project to benefit your local community and carry it out. You might be surprised at what you can achieve together. This gives you great experience to talk about at interviews.</p> <p>Weeks 7-8: Work placements This is the time to see how the skills you've developed so far can help you in the workplace. It's also a great chance to try out a type of work, or company, to see if you like it.</p> <p>Week 9: Plan for the future Time to plan your next steps after the programme. You'll get help to write a fantastic CV, practice your interview skills and make applications.</p> <p>Weeks 10-11: Meet the challenge You and your team will take on a challenge to help others in the community. This is when you get to test out all the skills you'll have worked on so far.</p> <p>Week 12: Have your say In your final week, you'll deliver a presentation with your team to an invited audience. This is your chance to show off the talents you've discovered! This may sound scary now, but after 12 weeks on the programme you'll be surprised at how far you've come.</p> <p>Entry Requirements Informal interview with Prince's Trust Team Leader and attendance at a Taster Day.</p>
-------------------------	-----------------	---

Public Services

Life in the public services can be challenging, rewarding and exciting; we can provide you with the skills, knowledge, and expertise to succeed.



Scan the QR code for more information on Public Services courses.

The uniformed public services offer an exciting and hugely varied choice of career opportunities.

Many of our students progress to Higher Education to study Criminology and related topics, such as Law, Sports Science and a range of teaching degrees, whilst others have pursued careers with HM Revenue & Customs and joined the services.

Recent students have joined the Royal Navy, Royal Air Force, British Army - including the Scots Guards Regiment, and Prison Service, as well as progressed to Higher Education, including studying Forensic Psychology at university.

FUTURE CAREERS		Source: Pathways
Fire Service Officers		
£23,280	»	£50,150
Police Officers (Sergeant & Below)		
£28,510	»	£61,410
Prison Service Officers		
£19,520	»	£42,050
Starter		Experienced

LEVEL	DURATION	WHAT YOU'LL STUDY	ENTRY REQUIREMENTS	AWARDING BODY
Preparation For Public Services			BTEC	
2	One year	Topics studied can include: <ul style="list-style-type: none">Public service skills and support for the communityEmployment in uniformed public servicesActivities and teamwork for the public servicesHealth and fitness for entry into the uniformed public servicesExpedition and land navigation skillsAttending emergency incidents in the public services You will be expected to attend a number of external activities and trips as part of the course.	5 GCSEs at Grade 9-3, including English or Maths. OR Level 1 Public Services plus GCSE English or Maths Grade 3 or Level 1 equivalent.	
Uniformed Protective Services			BTEC	
3	Two years	Topics studied can include: <ul style="list-style-type: none">Citizenship and diversity (Pearson-set)Behaviour and discipline in the uniformed protective servicesGlobal affairs, the media and the uniformed protective servicesPhysical preparation, health and wellbeingPlanning for and responding to emergency incidentsSkills for outdoor activities and the uniformed protective servicesDeveloping personal fitness programmesIntroduction to criminologyPolice powers and the law	Extended Diploma - 5 GCSEs at Grade 9-4 including BOTH English and Maths. Diploma - 4 GCSEs at Grade 9-4 including English OR Maths. OR Level 2 Public Services gaining a Merit portfolio grade plus GCSE Grade 4 or above in English or Maths or equivalent Level 2 and GCSE Grade 3 or Level 1 in the other.	



“This course is an ideal pathway to university, where I want to study Criminology.”

Max
Public Services student

Science

Whatever your ambitions, the sciences will help to sharpen your skills for further study and offer a route to a wide variety of careers.



Scan the QR code for more information on Science courses.

More employers are looking for highly-qualified people to work within the Science, Technology, Engineering and Maths (STEM) field.

But it's not just classroom based; we offer visits to university science faculties for workshops and seminars, visits and fairs to see science in action and the chance to enter competitions.

FUTURE CAREERS Source: Pathways

Biological Scientists	£21,130	»	£45,520
Chemical Scientists	£23,500	»	£50,610
Laboratory Technicians	£14,910	»	£32,120
Starter			Experienced

LEVEL	DURATION	WHAT YOU'LL STUDY	ENTRY REQUIREMENTS	AWARDING BODY
Applied Science				BTEC
3	Two years	Topics studied can include: <ul style="list-style-type: none">· Principles and applications of science· Practical scientific procedures and techniques· Science investigation skills· Contemporary issues in science Plus, a selection of specialised biology, chemistry and physics units.	5 GCSEs at Grade 9–4 including English Language and Maths. Grade 5 in Science.	
Biomedical Science				BTEC
3	Two years	Topics studied can include: <ul style="list-style-type: none">· Physiology of human body systems· Microbiology and microbiological techniques· Principles and applications of science· Practical scientific procedures and techniques Plus, a selection of specialised biology, chemistry and physics units.	Standard Level 3 vocational entry requirements apply - the minimum requirement is at least five GCSEs at Grade 4 OR at least 3 GCSE subjects at Grade 4 alongside alternative GCSE equivalent requirements. At least one of Maths or English Language must be at Grade 4 and neither lower than Grade 3. For this course you must also have achieved at least a Grade 4 in GCSE Science.	

“

My course is helping me to build on my knowledge of Science and further develop my practical skills within the subject. I really like the hands-on nature of the course and being able to experiment in the laboratory.”

Isaac
Applied Science student

VOCATIONAL COURSES

Sport

Our sport courses provide you with the skills and knowledge required for progression within the sports industry, whatever your aspirations.



“I met some great people via the course and had some fantastic experiences, going to places such as Holland to watch PSV Eindhoven, camping in Rosedale and representing the College in the various sports that I played.”

Harry
Sport student



Scan the QR code for more information on Sport courses.

Students have previously enjoyed a number of trips and visits as part of their course, including the Sport European Football Tour where they visited PSV Eindhoven FC for coached sessions.

Selby College also hosts its own Annual Sports Awards to celebrate the successes of its sports teams and individual students.

FUTURE CAREERS Source: Pathways

Fitness & Wellbeing Instructors	
£10,040	» £17,410
Leisure & Sports Managers	
£18,110	» £39,010
Sports Coaches	
£11,570	» £20,060
<small>Starter</small>	<small>Experienced</small>

LEVEL	DURATION	WHAT YOU'LL STUDY	ENTRY REQUIREMENTS	AWARDING BODY
Sport			NCFE	
2	One year	Topics studied can include: <ul style="list-style-type: none">• Participating in sport• Organising a sports event• Introduction to healthy exercise and nutrition• Plan, deliver and evaluate• Sports coaching• Developing sporting skills and tactical awareness• Anatomy and physiology	5 GCSEs at Grade 9-3 including English or Maths.	
Sport			NCFE	
3	Two years	The course is intended for post-16 learners who want to progress directly to employment, including self-employment, in sports coaching and development roles. It is also suitable for those wishing to progress to higher education, where learners have the added advantage of using the qualification to help them obtain part-time employment while studying.	Level 3 Certificate 4 GCSEs 9-4 including English OR Level 2 Sport with relevant English and/or Maths. Level 3 Diploma 5 GCSEs 9-4, including English and Maths.	
Sport & Exercise Science			BTEC	
3	Two years	Topics studied can include: <ul style="list-style-type: none">• Applied research methods in sport and exercise science• Applied sport and exercise psychology• Coaching for performance and fitness• Field and laboratory-based fitness testing• Functional anatomy• Nutrition for sport and exercise performance• Sport and exercise physiology• Physical activity for individual and group-based exercise• Specialised fitness training• Sports injury and assessment• Sports massage• Technology in sport and exercise science• Sociocultural Issues in sport and exercise	5 GCSEs at Grade 9-4, including BOTH English and Maths and Science/Physical Education.	

Travel & Tourism

With more than two million people employed in the Tourism industry in the UK, there are so many opportunities for a rewarding career upon completion of your course.



Scan the QR code for more information on Travel & Tourism courses.

This is the final call for dynamic individuals with ability, energy and ideas! If this is you, our Travel and Tourism courses will give you the qualifications you need to succeed in this exciting industry.

You'll have the opportunity to undertake local, national and international visits, residential visits and work placements.

FUTURE CAREERS

Source: Pathways

Air Travel Assistants	
£15,450	» £26,770
Travel Agents	
£14,790	» £25,640
Starter	Experienced

LEVEL	DURATION	WHAT YOU'LL STUDY	ENTRY REQUIREMENTS	AWARDING BODY
Travel & Tourism				NCFE
3	Two years	Topics studied can include: <ul style="list-style-type: none">· The UK travel and tourism industry· The cruise industry· Customer service in travel and tourism· Marketing for travel and tourism· Investigating airline cabin crew	5 GCSEs at Grade 9-4, including English or Maths. OR Level 2 qualification with Merit Grade, plus Level 2 English and Maths.	



“A major benefit of my course was that it helped to build my confidence, especially doing presentations, which is crucial to have when leading groups of 20 - 30 children and also as a member of Cabin Crew.”

Nicola
Level 3 Extended Diploma in Travel & Tourism student

Your opportunity to earn as you learn

Apprenticeships



Apprenticeships are a great mix of hands-on learning in the workplace and theory to give you the practical skills and knowledge you will need to thrive in the working world.

If you are passionate about the type of industry you want to work in, an Apprenticeship offers a clearly defined career route.

Whether you have an employer already secured or are looking to find one, we are here to support you.

If you are already employed, you can still become an apprentice and your employer can gain funding to support your further training needs.

Contact the Apprenticeships Team on **01924 789469** and apprenticeships@heartofyorkshire.ac.uk



“As part of my Apprenticeship, I learnt a lot about different working methods and how to work effectively with different roles and personalities within the Hospitality and Catering industry.”

Luke
Level 3 Chef De Partie Apprentice

How to become an apprentice

Prior to enrolment candidates need to be employed and working within their chosen industry. Regardless, if you have an employer or are looking to secure one, please contact the Apprenticeship Team so we can discuss your personal circumstances and next steps.

We work with several employers who recruit apprentices through us, therefore it is important that we have a copy of your CV on file to provide to prospective employers. Advertised vacancies can be found www.gov.uk/apply-apprenticeship.

Tips for applying:

- Proofread your application
- Refer to the main responsibilities of the job
- Include all work experience and qualifications

What does it involve?

An Apprenticeship is a paid job where you develop valuable work experience from experience mentors alongside industry recognised qualifications.

An Apprenticeship includes:

- Paid employment with holiday leave
- Hands-on-experience in a sector/role of interest
- Minimum of six hours off-the-job-training (or at least 20% of part time working hours)
- Formal assessment which leads to a nationally recognised qualification

How long does it take?

The length of an Apprenticeship varies depending on your prior experience and relevant qualification and industry sector.

Our Apprenticeships Team are here to help with your application, so if you're unsure about what to include, or want to find out more about a vacancy to check that it is right for you, give us a call on **01924 789469** or email us at apprenticeships@heartofyorkshire.ac.uk

The benefits of choosing an Apprenticeship:

- 1 Earn money whilst you learn**
- 2 Gain a recognised qualification and valuable workplace experience**
- 3 Apprentices are employees of the company and have the same benefits as all employees**
- 4 A completed Apprenticeship shows employers exactly what you are able to do and at what standard**
- 5 Employers say that Apprentices are 15% more employable than those with other qualifications**
- 6 Progress in your career without any student debt from university**
- 7 Apprenticeships can open the door to Higher Apprenticeships and other Higher Education programmes**

A

Look out for this symbol on the subject area pages in this prospectus, which shows where Apprenticeships are available.



Our Apprenticeships

LEVEL APPRENTICESHIP	
Business & Management	
2	Customer Service Practitioner
3	Business Administrator
3	Customer Service Specialist
3	Emergency Service Contact Handling
3	Human Resource Support
3	Team Leader/Supervisor
5	Human Resource Consultant
5	Operational/Departmental Management
Childcare, Early Years & Childhood Studies	
2	Early Years Practitioner
3	Early Years Educator
3	Teaching Assistant
4	Children, Young People & Families Practitioner



The thing I enjoy most about my Apprenticeship is working within a team of people who are supportive and that I can learn from. It's also giving me experience of working in an office environment and in marketing and events planning, which I have really enjoyed. I hope to progress to a career in marketing following my Apprenticeship."

Chloe
Business Administration Apprentice

LEVEL APPRENTICESHIP	
Construction	
2	Bricklayer
2	Carpentry & Joinery - Site
2	Property Maintenance Operative
3	Domestic Electrician
Engineering	
2	Food & Drink Process Operator
3	Food & Drink Maintenance Engineer
3	Maintenance & Operations Engineering Technician (Mechanical Pathway)
4	Engineering Manufacturing Technician

LEVEL APPRENTICESHIP	
Health & Social Care	
2	Adult Care Worker
2	Healthcare Science Assistant
2	Healthcare Support Worker
3	Dental Nurse
3	Lead Adult Care Worker
3	Senior Healthcare Support Worker
4	Healthcare Science Associate
Hospitality & Catering	
2	Commis Chef
2	Food & Drink Process Operator
2	Hospitality Team Member
2	Production Chef
3	Hospitality Supervisor
4	Hospitality Manager

Entry requirements for Apprenticeships

- Level 2 Apprenticeships require Maths and English GCSE 2/3 or equivalent
- Level 3 Apprenticeships require Maths and English GCSE 4-9 or equivalent
- Level 4 Apprenticeships require Maths and English GCSE 4-9 or equivalent

All apprentices are required to complete a Maths and English assessment and are required to meet the specified entry requirements.



Information for Parents

We hope that this prospectus includes information that parents will find useful and beneficial to ensure that your son or daughter has a smooth transition to college.

Below we have answered some of the most common questions, but please do get in touch at studentcentral@heartofyorkshire.ac.uk or on **01757 211000** if you have any further enquiries.

How does the College look after students in terms of safeguarding?

Selby College recognises its moral and statutory responsibility to safeguard and promote welfare to students. We work to provide a safe and welcoming environment where students are respected and valued. We are alert to the signs of abuse and neglect and follow our procedures to ensure our students receive effective support, protection and justice.

Does my son/daughter require a student ID card?

Your son/daughter will be issued with a student ID card at enrolment and they are expected to wear it visibly at all times when on college premises and using college facilities. This ensures that we can provide a safe, secure and welcoming environment in which to study. Please support us by encouraging your son/daughter to bring their card with them every day.

I'm worried about the cost of going to college. How do we apply for Financial Support?

For some students aged 16-18 from households with a gross income of less than £30,000 per annum, your son or daughter will be eligible for a Bursary, which means they will be able to travel to college free of charge.

The Bursary also provides assistance with meals, necessary equipment and trips. For more details of the College Bursary, please contact Student Central on **01757 211040** or email studentcentral@heartofyorkshire.ac.uk

How will the College help if my son/daughter needs Additional Learning Support?

If your son or daughter have additional learning needs, our specialist team will be able to provide them with the support, access and learning resources they need throughout their time at college. We can also provide specialist equipment if your son/daughter has a physical disability, visual or hearing impairment.

For further help and information, please contact the Additional Learning Support Manager, Ruth Baxter, on **01757 211049** or email RBaxter@heartofyorkshire.ac.uk

What will happen if my son or daughter doesn't pass their GCSE Maths and English exams?

If your son or daughter does not achieve a Grade 4 or above in both GCSE Maths and English Language they will continue to study these qualifications as part of their course.

This is a mandatory requirement of their study programme and cannot be opted out of.

Many university courses and careers require a GCSE pass in both Maths and English and failure to achieve these qualifications may restrict your son/daughter's career options.

Additional Information

Course Information

Our Course Information Team can explain all about the hundreds of courses we have on offer, please call **01924 789111** or email courseinfo@heartofyorkshire.ac.uk

Careers and Educational Guidance

To make an appointment with one of the careers team, please call **01757 211000** or email careers@heartofyorkshire.ac.uk

Financial Support

Contact the financial support team to arrange an appointment on **01757 211000** or by emailing financialsupport@heartofyorkshire.ac.uk

You can find out more information at: <https://heartofyorkshire.paymystudent.com/portal/>

Additional Learning Support

For more information, you can contact the Additional Support team on **01757 211049**.

Equal Opportunities For All

Selby College is committed to giving learners access to the services and facilities we offer. We oppose all forms of discrimination and strive to ensure all members of our community are treated equally and fairly.

Sustainability

Sustainability at Heart of Yorkshire Education Group

At the Heart of Yorkshire Education Group, which includes Castleford College, Selby College and Wakefield College, we are passionate about sustainability and we recognise that we all have a role to support climate action to respond to the climate emergency.

Human populations and activities are contributing to the build-up of man-made gases in the atmosphere which is having a huge impact on global warming, weather patterns, extreme weather conditions and our wildlife and populations. The impact of those in the world's poorest communities is particularly significant.

Here at the Heart of Yorkshire Education Group we, are continuing to develop our sustainability strategy and have many projects and initiatives to support the plan to reduce our carbon footprint. Our strategy document sets out our focus on Green Skills for Green Jobs, our Carbon Management Plan for the group on our journey to net zero and our engagement with partners and stakeholders. Our contribution to addressing the issues of climate change began some time ago, but there is always more to do and our strategy will address the plan for the years to come.

We have achieved a significant reduction of carbon over the last ten years and it is our aim to achieve Net Zero by 2038.

To achieve our goals, we will continue to work with our suppliers, consultants, students, and staff to cultivate a culture of carbon reduction and environmental awareness, as an integral part of our College's activities.

Our students play a big part in our journey. You can join our projects and student groups that will focus on climate action and get involved in activities across College to raise awareness, take positive action and create and join our campaigns and activities which will make a real difference.

Making changes as an individual whenever you can also helps support our planet. Reduce your footprint and increase your hand-print as an influencer and to raise awareness!

We pledge to act now to respond to the climate emergency.



Date of publication: September 2023

YOUR JOURNEY, YOUR CAREER.
It starts here...

Open Events

Find out more about:

**A Levels, T Levels, Vocational Courses,
Apprenticeships and Foundation Learning**

Saturday 21 October 2023
10am to 12pm

Saturday 3 February 2024
10am to 12pm

Wednesday 22 November 2023
5pm to 7pm

Wednesday 19 June 2024
5pm to 7pm



Scan QR code for more
information and to register online



selby.ac.uk

Key Dates 2023/24

September 2023

Find out about us and your options when we visit your school for the launch of our new school leaver prospectus.

October 2023

Applications open and interview evenings start.

Our Open Events offer you the perfect opportunity to meet our wonderful staff, see our amazing facilities and find out more about life at College.

Open Event

Saturday 21 October, 10am - 12pm

Interview evenings run regularly from October onwards.

November 2023

Open Event

Wednesday 22 November, 5pm - 7pm

February 2024

Open Event

Saturday 3 February, 10am - 12pm

April 2024

Have you submitted your application?

If not, do so as soon as possible.

Applications received by 1st May will be given priority for an interview date.

June 2024

Open Event

Wednesday 19 June, 5pm - 7pm

July 2024

New Student Day

Monday 8 July

Attend a New Student Day event in July to participate in course related activities, meet other students and find out what College life is like.

August 2024

A Level and GCSE results released.

If you need help or advice about your next steps, get in touch to speak with our friendly and supportive team.

Enrolment begins on GCSE results day.





Abbot's Road, Selby, North Yorkshire YO8 8AT

www.selby.ac.uk

General Enquiries: t: 01757 211000 e: info@heartofyorkshire.ac.uk

Course Information: t: 01924 789111 e: courseinfo@heartofyorkshire.ac.uk

Follow us:     

Part of the:



www.heartofyorkshire.ac.uk