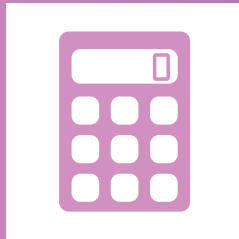
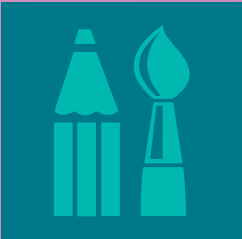


Learning, your way.

Part-Time & Higher
Education Courses
2017/18



Welcome to the new Selby College Part-Time & Higher Education Guide for courses starting in September 2017.

This guide provides information for all Part-Time and Higher Education courses for adult learners wanting to gain additional qualifications, learn a new skill, change career path or simply take up a new interest to enjoy.

Selby College has the widest choice of courses of any college in the area, with subjects ranging from Accountancy to Teaching.

Levels range from basic Maths and English classes right through to Degree level programmes and are available on a part-time and short course basis at either our main campus or the 1811 Building in Selby town centre at New Lane.

Enrolment

Daytime enrolment begins on Tuesday 1st August 2017 (Monday-Friday 9.30am-4.00pm). Evening enrolment takes place on Monday 4th September 2017 (5.30pm-7.00pm). HE course enrolment takes place on Thursday 31st August 2017 (5.30pm-7.00pm). Please note: - Students wishing to take a Higher Education course must have applied and been offered a place in advance of the College Enrolment Evening. Please contact the Higher Education Department, Tel 01757 211114 for further details.

What else can Selby College offer?

You do not need to be a student to enjoy the excellent facilities on offer at one of England's top-performing colleges. With our state-of-the-art £35m campus, Selby College is one of the most up-to-date colleges in the country. Even if you are not interested in enrolling on a course this year, you can still benefit from the superb range of facilities located on your doorstep.

The Restaurant

Selby College's award-winning Restaurant provides a unique contemporary cuisine dining experience for customers at lunchtime and special evenings. Next time you are having a special family event why not book the Restaurant? **Tel: 01757 211008 or email: info@selby.ac.uk**

Aspire Health and Well Being Centre

The Aspire Health and Well-Being Centre has everything you could need to pamper yourself. Our contemporary hairdressing salon offers a full range of ladies and gentlemen's hairdressing services. Our fully equipped spa and beauty therapy salons offer a fantastic range of up-to-date beauty and holistic therapy treatments for both men and women. **To book your appointment or treatment Tel: 01757 211021**

Want a better job but need to improve your skills?

Did you know, you can apply for an Advanced Learner Loan to help with the costs of your Selby College course, if you're 19 or older?

There are no upfront fees to pay, your repayments don't start until the April after you complete or leave the course and your income is more than £21,000 a year.

To find out more about how we can help improve your skills with an Advanced Learner Loan, contact Selby College Student Services, **Tel 01757 211040** or email **info@selby.ac.uk**

Advanced Learner Loans*

If you are aged 19+ and studying for a Level 3 or higher level course, you can now apply for an Advanced Learner Loan to help with the costs of your course.

For more information, contact Student Services Tel: 01757 211040.

HE Student Loans

For Higher Education courses tuition fee loans are available from the Student Loan Company for most students - see www.slc.co.uk or www.direct.gov.uk/apply-online-for-student-finance for more details about student finance options and to find out whether you would qualify for a loan.

Support for Learning Difficulties and Disabilities

The college welcomes all students for whom it can provide an appropriate course and level of support and has staff experts who can help with any physical or learning difficulty you may have. To help Selby College provide the best support for you, please tell us as soon as possible if you have a learning difficulty or disability.

As the college is a recently built campus, most parts are fully accessible and include wide corridors, drop off areas and parking bays, fire refuge zones, disabled toilets and lifts.

Please remember to bring...

Please make sure you bring with you a form of identification i.e. a Driving Licence, full payment and proof of benefits, (if appropriate) otherwise you will not be able to enrol and secure your place on the course.

Course Enquiries

If you are unsure about which course to take, advice and support are always available. Student Services can tell you much more about what the courses involve, and can enrol you on your chosen course(s).

They can also arrange a guidance appointment for you if you need further advice. Call us on Tel: 01757 211040 to make an appointment. For Higher Education course enquiries please Tel 01757 211114.

Fees, Concessions and How to Pay

Fees stated are an inclusive fee which include: tuition, examination and registration costs.

Course Specific Charges

For some courses, you may be required to pay for course materials, additional individual fees to Examination Awarding Body organisations or to pay for trips etc. You will be advised of these when you enrol.

Where courses are for more than one year, the course fee quoted is for the first year of the course only*.

*Terms and Conditions apply.

Course fees are payable on enrolment by cash, cheque, MasterCard/Visa or American Express.

We accept payment by instalments where the total cost of the course is more than £500. This will require an initial payment of 30% payable on enrolment followed by the remainder by 4 equal instalments.

If your employer is paying for the course, we will require a signed letter or purchase order number from them as confirmation at the time of enrolment.

Contact the college for further information about concessions Tel: 01757 211097.

Impartial Information, Advice & Guidance (IAG)

The Student Services team will give you advice about which type of course is most appropriate to you.

Accredited with the Matrix Standard, the national quality mark for organisations providing IAG, you can be sure that the advice you receive will be friendly, personalised, unbiased, informed and professional – helping you to make the right course choice.

*Please Note:- if you are seeking a 19+ loan to pay for your course, you are responsible for paying the tuition fees if a loan application is rejected by Student Finance England.

 Higher Education

**HIGH QUALITY COURSES
DELIVERED LOCALLY
AT AN AFFORDABLE PRICE**

Visit selby.ac.uk/higher-education or call **01757 211114**



 selby college
Apprenticeships

EARN AS YOU LEARN
16 years or over?

Find out more about our range of Apprenticeships.

T. 01757 211097 E. scbs@selby.ac.uk or selby.ac.uk



| Code | Course Title | Level | Venue | Weeks | Day | Date | Start | Finish | Cost |
|------|--------------|-------|-------|-------|-----|------|-------|--------|------|
|------|--------------|-------|-------|-------|-----|------|-------|--------|------|

S ACCOUNTING

| | | | | | | | | | |
|-------|----------------|---|--------|----|-----|----------|-------|-------|--------|
| AK318 | AAT Accounting | 2 | S/Coll | 36 | Mon | 11/09/17 | 09:30 | 12:30 | £1,050 |
| AK319 | AAT Accounting | 2 | S/Coll | 36 | Tue | 12/09/17 | 17:00 | 20:00 | £1,050 |
| AK320 | AAT Accounting | 3 | S/Coll | 36 | Wed | 13/09/17 | 13:30 | 20:00 | £2,050 |

S BACK-TO-WORK

| | | | | | | | | | |
|-------|---|---|--------|---|-----|---------|-------|-------|--------|
| TT001 | Intro to working in Business Administration | E | S/Coll | 5 | TBC | Various | TBC | TBC | Free B |
| TT002 | Intro to working in Customer Service | E | S/Coll | 5 | TBC | Various | TBC | TBC | Free B |
| TT003 | Intro to working in Health and Social Care | E | S/Coll | 5 | TBC | Various | TBC | TBC | Free B |
| CN304 | Introduction to Sage Accounts | E | S/Coll | 5 | Thu | Nov-17 | 18:00 | 21:00 | £75 |
| CN304 | Introduction to Sage Accounts | E | S/Coll | 5 | Thu | Mar-18 | 18:00 | 21:00 | £75 |

S COMMUNICATION SKILLS

| | | | | | | | | | |
|-------|--|---------|--------|----|----------------|---------|-------|-------|------|
| FK323 | Intro to Communication Skills for Speakers of Other Languages (4) | E | S/Coll | 10 | Tue/Wed Thu | Sept-17 | 18.30 | 21:00 | £100 |
| FK323 | Intro to Communication Skills for Speakers of Other Languages (3) | E | S/Coll | 10 | TBC | Jan-18 | 10:00 | 14:00 | £100 |
| FK405 | English for Speakers of Others Languages (ESOL) (3) Day group only if enough interest | Various | S/Coll | 20 | TBC | Sept-17 | 10:00 | 14:00 | £200 |
| FK405 | English for Speakers of Others Languages (ESOL) | Various | S/Coll | 20 | Tue/Wed Thu | Jan-18 | 18.30 | 21:00 | £200 |

S COMPUTING

| | | | | | | | | | |
|-------|---|---|--------|----|------|---------|-------|-------|------|
| CN302 | European Computer Driving Licence (New Version) ITQ (5) | 2 | 1811 | 20 | Flex | Flex | Flex | Flex | £250 |
| CN303 | Intro to IT | E | 1811 | 5 | Fri | Various | Flex | Flex | £30 |
| CN308 | European Driving Licence (New Version) ITQ (5) | 1 | 1811 | 20 | Flex | Flex | Flex | Flex | £150 |
| TT004 | Level 2 Full Course in Unit 2: Webpage creation (LEVEL 2) OCR | 2 | S/Coll | 10 | TBC | Jan-18 | 18:00 | 21:00 | £140 |
| TT005 | Level 2 Full Course in Unit 2: Webpage creation (LEVEL 2) OCR | 2 | S/Coll | 10 | TBC | Mar-18 | 18:00 | 21:00 | £140 |

S CONSTRUCTION

| | | | | | | | | | |
|-------|---|-----|--------|----------|------|------|-------|-------|------|
| XJ302 | 17th Edition Electrical Wiring Regulations (BS 7671) amendment 3 (6) | N/A | S/Coll | 5.5 Days | Flex | Flex | 09.15 | 16.30 | £675 |
| XJ303 | 17th Edition Electrical Wiring Regulations (BS 7671) amendment 3 (Fast Track) (6) | N/A | S/Coll | 2 Days | Flex | Flex | 09.15 | 16.30 | £375 |
| XJ304 | 17th Edition Electrical Wiring Regulations (BS 7671) amendment update course (6) | N/A | S/Coll | 1 Day | Flex | Flex | 09.15 | 16.30 | £195 |
| XJ305 | Combined In-service Inspection and Testing of Electrical Equipment (PAT) (6) | N/A | S/Coll | 3 Days | Flex | Flex | 09.15 | 16.30 | £400 |

| Code | Course Title | Level | Venue | Weeks | Day | Date | Start | Finish | Cost |
|------|--------------|-------|-------|-------|-----|------|-------|--------|------|
|------|--------------|-------|-------|-------|-----|------|-------|--------|------|

S CRAFTS

| | | | | | | | | | |
|-------|---|---|--------|----|-----|---------|-------|-------|------|
| NE302 | Techniques in Sugarpaste Mini Cakes (8) | 1 | S/Coll | 10 | TBC | Sept-17 | 18:00 | 21:00 | £100 |
| NE303 | Techniques in Royal Icing (8) | 1 | S/Coll | 10 | TBC | Jan-18 | 18:00 | 21:00 | £100 |
| NB308 | Techniques in Sugar Flowers (8) | 1 | S/Coll | 10 | TBC | Apr-18 | 18:00 | 21:00 | £100 |

S DISTANCE LEARNING

| | | | | | | | | | |
|-------|--|---|-----|----|------|------|------|------|------|
| NH325 | Nutrition & Health | 2 | N/A | 11 | Flex | Flex | Flex | Flex | FOC |
| PH301 | Understanding the Care & Management of Diabetes | 2 | N/A | 9 | Flex | Flex | Flex | Flex | FOC |
| PR314 | Awareness of Mental Health Problems | 2 | N/A | 14 | Flex | Flex | Flex | Flex | FOC |
| AF325 | Team Leading | 2 | N/A | 17 | Flex | Flex | Flex | Flex | FOC |
| BA321 | Customer Service | 2 | N/A | 18 | Flex | Flex | Flex | Flex | FOC |
| HE304 | Equality & Diversity | 2 | N/A | 12 | Flex | Flex | Flex | Flex | FOC |
| AB313 | Business Administration | 2 | N/A | 15 | Flex | Flex | Flex | Flex | FOC |
| PR307 | Preparing to Work in Adult Social Care | 2 | N/A | 15 | Flex | Flex | Flex | Flex | FOC |
| PL337 | Safe Handling of Medication | 2 | N/A | 11 | Flex | Flex | Flex | Flex | FOC |
| PR312 | Principles of Working with Individuals with Learning Disabilities | 2 | N/A | 13 | Flex | Flex | Flex | Flex | FOC |
| PA306 | Prevention and Control of Infection in Health Care Settings | 2 | N/A | 10 | Flex | Flex | Flex | Flex | FOC |
| PR311 | Principles of Dementia Care | 2 | N/A | 10 | Flex | Flex | Flex | Flex | FOC |
| PR313 | Principles of End of Life Care | 2 | N/A | 12 | Flex | Flex | Flex | Flex | FOC |
| PA307 | Understanding Dignity and Safeguarding in Adult Health and Social Care | 2 | N/A | 13 | Flex | Flex | Flex | Flex | FOC |
| PA308 | Certificate in Common Health Conditions (QCF) | 2 | N/A | 13 | Flex | Flex | Flex | Flex | FOC |
| PS301 | Certificate in Information, Advice or Guidance | 2 | N/A | 10 | Flex | Flex | Flex | Flex | FOC |
| PA309 | Understanding Autism | 2 | N/A | 14 | Flex | Flex | Flex | Flex | FOC |
| PT303 | Principles of Care Planning | 2 | N/A | 15 | Flex | Flex | Flex | Flex | FOC |
| PA310 | Certificate in Customer Service for Health and Social Care Settings | 2 | N/A | 15 | Flex | Flex | Flex | Flex | FOC |
| PR317 | Certificate in Understanding Behaviour that Challenges | 2 | N/A | 15 | Flex | Flex | Flex | Flex | FOC |
| PR303 | End of Life Care | 3 | N/A | 16 | Flex | Flex | Flex | Flex | £724 |
| PR315 | Greater Understanding of Dementia | 3 | N/A | 8 | Flex | Flex | Flex | Flex | £600 |
| PR308 | Preparing to Work in Adult Social Care | 3 | N/A | 20 | Flex | Flex | Flex | Flex | £724 |
| BA323 | Certificate in Customer Service | 3 | N/A | 20 | Flex | Flex | Flex | Flex | £724 |

| Code | Course Title | Level | Venue | Weeks | Day | Date | Start | Finish | Cost |
|------|--------------|-------|-------|-------|-----|------|-------|--------|------|
|------|--------------|-------|-------|-------|-----|------|-------|--------|------|

S HIGHER EDUCATION

| | | | | | | | | | |
|-------|--|-------|--------|----|---------------|---------|-------|-------|----------|
| GB207 | In-service Certificate in Education/PGCE for (Lifelong Learning) (PT) (L) 2 years duration | 4/5/6 | S/Coll | 34 | 1 eve | Sept-17 | 18:00 | 21:00 | £3,475 A |
| PQ214 | Foundation Degree in Early Childhood Studies (PT) (L) 3 years duration | 4/5 | S/Coll | 30 | 1 Aft & 1 Eve | Sept-17 | TBC | TBC | £4,355 A |
| PQ219 | Foundation Degree in Early Childhood Studies (FT) (L) 2 years duration | 4/5 | S/Coll | 30 | 2 Afts/ Eves | Sept-17 | TBC | TBC | £6,500 A |
| GB218 | Foundation Degree in Learning Support (FT) (L) 2 years duration | 4/5 | S/Coll | 30 | 1/2 Eve | Sept-17 | 18:00 | 21:00 | £6,500 A |
| GB209 | Foundation Degree in Learning Support (PT) (L) 3 years duration | 4/5 | S/Coll | 30 | 1 Eve | Sept-17 | 18:00 | 21:00 | £4,355 A |
| YA020 | Higher National Diploma in Sport and Exercise Sciences (FT) (L) 2 years duration | 4/5 | CDSC | 30 | 2/3 Days | Sept-17 | 09:15 | 16:30 | £6,500 A |
| MA210 | BSc in Sports Coaching and Exercise Science (FT) (L) 3 years duration | 4,5,6 | S/Coll | 30 | 2 Days | Sept-17 | 09:15 | 16:30 | £6,500 A |
| YB011 | Higher National Certificate in General Engineering (PT) (D, L) 18 months duration | 4 | S/Coll | 30 | 1 Day | Sept-17 | 09:00 | 19:00 | £6,500 A |
| YB013 | Higher National Diploma in General Engineering (PT) (C, D) 18 months duration | 5 | S/Coll | 30 | 1 Day | Sept-17 | 09:00 | 19:00 | £6,500 A |
| YA001 | Higher National Certificate in Business (FT) (L) 1 year duration (L, D) | 4 | S/Coll | 30 | 2/3 Days | Sept-17 | TBC | TBC | £6,500 A |
| YB001 | Higher National Certificate in Business (PT) | 4 | S/Coll | 30 | TBC | Sept-17 | TBC | TBC | £6,500 A |
| YA002 | Higher National Diploma in Business (FT) 1 year duration (L, C) | 5 | S/Coll | 30 | 2/3 Days | Sept-17 | 09:15 | 16:30 | £6,500 A |
| YA004 | Higher National Certificate in Computing and Systems Development (FT) (L) 1 year duration | 4 | S/Coll | 30 | 2/3 Days | Sept-17 | 09:15 | 16:30 | £6,500 |
| YA005 | Higher National Diploma in Computing and Systems Development (FT) (L, C) 1 year duration | 5 | S/Coll | 30 | 2/3 Days | Sept-17 | 09:15 | 16:30 | £6,500 |
| YA022 | Higher National Diploma in Art & Design (FT) 2 years duration (L) | 4/5 | S/Coll | 30 | 2/3 Days | Sept-17 | TBC | TBC | £6,500 A |
| PA100 | Access to Higher Education (FT and PT) Health Science Professions (L) 1 year full time, 2 years part time (including registration fee) | 3 | S/Coll | 30 | 2 Days | Sept-17 | 09:15 | 16:00 | £3,384 |
| ED100 | Access to Higher Education (FT and PT) Humanities & Social Sciences (L) 1 year full time, 2 years part time (including registration fee) | 3 | S/Coll | 30 | 2 Days | Sept-17 | 09:15 | 16:00 | £3,384 |

| Code | Course Title | Level | Venue | Weeks | Day | Date | Start | Finish | Cost |
|------|--------------|-------|-------|-------|-----|------|-------|--------|------|
|------|--------------|-------|-------|-------|-----|------|-------|--------|------|

S ENGINEERING

| | | | | | | | | | |
|-------|---|-------|--------|-------|---------------|----------|-------|-------|--------|
| VF323 | City and Guilds AutoCAD (6) | 2 | S/Coll | 25 | Wed | TBC | 18:00 | 21:00 | £425 |
| VF324 | City and Guilds AutoCAD (6) | 3 | S/Coll | 25 | Wed | TBC | 18:00 | 21:00 | £425 |
| VF325 | City and Guilds AutoCAD 3D (6) | 3 | S/Coll | 25 | Wed | TBC | 18:00 | 21:00 | £425 |
| VF326 | City and Guilds CAD Parametric Modelling (6) | 2 | S/Coll | 25 | Wed | TBC | 18:00 | 21:00 | £425 |
| VF327 | City and Guilds CAD Parametric Modelling (6) | 3 | S/Coll | 25 | Wed | TBC | 18:00 | 21:00 | £425 |
| WB220 | City and Guilds Welding 3268 (6) | 1,2,3 | S/Coll | 25 | Tue/Wed/Thurs | 27/09/17 | 18:00 | 21:00 | £730 |
| XA010 | BTEC National Extended Certificate (6) | 3 | S/Coll | 35 | Wed | 14/09/17 | 09:15 | 19:30 | £1,210 |
| WB999 | Welding Codings tests to BS4872, BS EN 9606 or ASME IX | N/A | S/Coll | 1 Day | Flex | Flex | 09:15 | 16:30 | £320 |

S FIRST AID/HEALTH & SAFETY

| | | | | | | | | | |
|-------|-------------------------------------|-----|--------|--------|------|--------------|-------|-------|------|
| PL346 | Emergency First Aid | 2 | S/Coll | 1 Day | Mon | 18/09/17 | 09:15 | 16:30 | £50 |
| PL346 | Emergency First Aid | 2 | S/Coll | 1 Day | Mon | 09/10/17 | 09:15 | 16:30 | £50 |
| PL346 | Emergency First Aid | 2 | S/Coll | 1 Day | Mon | 11/12/17 | 09:15 | 16:30 | £50 |
| PL346 | Emergency First Aid | 2 | S/Coll | 1 Day | Wed | 07/02/18 | 09:15 | 16:30 | £50 |
| PL346 | Emergency First Aid | 2 | S/Coll | 1 Day | Tue | 24/04/18 | 09:15 | 16:30 | £50 |
| PL346 | Emergency First Aid | 2 | S/Coll | 1 Day | Wed | 16/05/18 | 09:15 | 16:30 | £50 |
| PL346 | Emergency First Aid | 2 | S/Coll | 1 Day | Tue | 12/06/18 | 09:15 | 16:30 | £50 |
| PL302 | First Aid at Work | 3 | S/Coll | 3 Days | Wed | 13,14,15 Dec | 09:15 | 16:30 | £135 |
| PL302 | First Aid at Work | 3 | S/Coll | 3 Days | Wed | 13,14,15 Jun | 09:15 | 16:30 | £135 |
| PL303 | First Aid at Work Refresher | 3 | S/Coll | 2 Days | Thu | 11/01/18 | 09:15 | 16:30 | £100 |
| PL303 | First Aid at Work Refresher | 3 | S/Coll | 2 Days | Thu | 08/02/18 | 09:15 | 16:30 | £100 |
| PL303 | First Aid at Work Refresher | 3 | S/Coll | 2 Days | Thu | 17/05/18 | 09:15 | 16:30 | £100 |
| PD303 | Paediatric First Aid | 2 | S/Coll | 3 Days | Wed | 22/11/17 | 09:30 | 14:30 | £120 |
| PD303 | Paediatric First Aid | 2 | S/Coll | 3 Days | Wed | 25/04/18 | 09:30 | 14:30 | £120 |
| PL999 | Health & Safety (online) | N/A | N/A | Flex | Flex | Flex | Flex | Flex | £25 |

S GCSEs

| | | | | | | | | | |
|-------|-------------------------|---|--------|----|-----|----------|-------|-------|------|
| RB151 | GCSE Maths | 2 | S/Coll | 32 | Tue | 12/09/17 | 18:00 | 21:00 | Free |
| FK151 | GCSE English | 2 | S/Coll | 32 | Thu | 14.09/17 | 18:00 | 21:00 | Free |
| RH153 | GCSE Biology (3) | 2 | S/Coll | 32 | TBC | TBC | 18:00 | 21:00 | £350 |

| Code | Course Title | Level | Venue | Weeks | Day | Date | Start | Finish | Cost |
|------|--------------|-------|-------|-------|-----|------|-------|--------|------|
|------|--------------|-------|-------|-------|-----|------|-------|--------|------|

S HAIR & BEAUTY

| | | | | | | | | | |
|-------|---|---|--------|----|-----|----------|-------|-------|------|
| HL321 | Nail Technology | 2 | S/Coll | 34 | Tue | 19/09/17 | 18:00 | 21:00 | £675 |
| HL215 | NVQ Level 2 Diploma in Barbering (E) | 2 | S/Coll | 34 | Tue | 19/09/17 | 18:00 | 21:00 | £950 |

S HOSPITALITY & CATERING

| | | | | | | | | | |
|-------|-----------------------------|---|--------|-------|------|----------|-------|-------|-----|
| NH320 | Food Safety | 2 | S/Coll | 1 Day | Tue | 19/09/17 | 09:15 | 16:30 | £55 |
| NH320 | Food Safety | 2 | S/Coll | 1 Day | Tue | 30/01/18 | 09:15 | 16:30 | £55 |
| NH320 | Food Safety | 2 | S/Coll | 1 Day | Tue | 22/05/18 | 09:15 | 16:30 | £55 |
| NH320 | Food Safety (online) | 2 | Flex | Flex | Flex | Flex | Flex | Flex | £25 |
| NH316 | Food Safety | 3 | Flex | Flex | Flex | Flex | Flex | Flex | TBC |

S MATHS & ENGLISH

| | | | | | | | | | |
|-------|-----------------------------------|-----|------|----|------|------|------|------|-----|
| HD400 | Intro to Maths and English | E | 1811 | 5 | Flex | Flex | Flex | Flex | FOC |
| FK999 | Adult English | N/A | 1811 | 24 | Flex | Flex | Flex | Flex | FOC |
| RB999 | Adult Maths | N/A | 1811 | 24 | Flex | Flex | Flex | Flex | FOC |

S TEACHING & LEARNING SUPPORT

| | | | | | | | | | |
|-------|---|---|--------|----|-----|----------|-------|-------|--------|
| GA200 | Award in Education and Training (Formerly PTTLs) | 3 | S/Coll | 6 | Tue | 26/09/17 | 09:15 | 16:00 | £375 |
| GA200 | Award in Education and Training (Formerly PTTLs) | 3 | S/Coll | 6 | Tue | 17/04/18 | 09:15 | 16:00 | £375 |
| GD319 | Certificate in Supporting Teaching and Learning in Schools | 2 | 1811 | 40 | TBC | Sept-17 | 09:30 | 15:00 | £350 |
| GD319 | Certificate in Supporting Teaching and Learning in Schools | 2 | 1811 | 40 | TBC | Feb-18 | 09:30 | 15:00 | £350 |
| GD320 | Certificate in Supporting Teaching and Learning in Schools | 3 | 1811 | 40 | TBC | Sept-17 | 09:30 | 15:00 | £1,417 |
| HD387 | Specialist Diploma in Delivering English (L) | 5 | S/Coll | 15 | TBC | TBC | 09:30 | 16:30 | £1,500 |
| HD383 | Specialist Diploma in Delivering Mathematics (L) | 5 | S/Coll | 15 | TBC | TBC | 09:30 | 16:30 | £1,500 |

KEY TO COURSE LEVELS & ABBREVIATIONS

E Entry Level programmes;

1 College Certificate, NVQ Level 1;

2 GCSE's, City & Guilds National Certificate & Diploma, NVQ Level 2;

3 AS and A Level, BTEC National Diploma/Certificate, City & Guilds National Certificate, CACHE Certificate and Diploma, Access, NVQ Level 3;

4 Higher National Certificate (HNC) NVQ Level 4

5 Foundation Degree (FdA, FdSc), Higher National Diploma (HND),

Professional Diploma/Certificate, NVQ Level 5

N/A Level not specified

TBC To be confirmed, contact Business Services (Tel 01757 211097 for details);

Flex Flexible Delivery (dates and times)

FT Full Time **PT** Part Time

1811 1811 Centre, New Lane, Selby. Tel (01757) 700407 Email 1811centre@selby.ac.uk;

A Fee is per year of a programme;

B Free subject to criteria;

C Must complete HNC before applying for HND;

D Fee is pro rata **E** Practical delivered and assessed in college. Written work to be completed in learners own time through Moodle;

FOC Free of Charge for e-learning version but £25 charge for paper-based;

CDSC Club Doncaster Sports College; **L** May be eligible for a loan or support with funding. Contact College for more information **Tel 01757 211114 for details.**

KEY TO NUMBER CODES

The numbers in brackets that appear after some of the course descriptions relate to the following:

(2) Study books at an extra cost;

(3) May be cancelled if insufficient interest;

(4) Day will depend on level (assessed before start of the course)

(5) Contact the 1811 Centre for further details on Tel 01757 700407 Email 1811centre@selby.ac.uk;

(6) Contact Power Skills for more info on Tel 01757 211066;

(7) Extra cost for kit;

(8) Not accredited

Daytime Enrolment...

From Tuesday 1st August 2017, 9.30am-4.00pm

Evening Enrolment... (Non-HE Courses)

Monday 4th September 2017, 5.30pm-7.00pm

HE Enrolment...

Thursday 31st August 2017, 5.30pm-7.00pm



Don't miss out...

Equal Opportunities For All

Selby College is committed to giving learners access to the services and facilities we offer. We oppose all forms of discrimination and strive to ensure all members of our community are treated equally and fairly.

Disclaimer

Selby College will take all reasonable steps to provide the educational services and range of courses as described in this 2017/18 Part-Time and Higher Education Guide and in other related documents. However, it does not guarantee the provision of such services. The provision of courses is dependent on there being sufficient demand to make their operation viable for the college to run.

At the time of publication (July 2017) all course titles and information were correct. Updates to this Part-Time and Higher Education Guide will be made to the online version available at www.selby.ac.uk



Safeguarding Policy

Selby College recognises its moral and statutory responsibility to safeguard and promote the welfare of students. We work to provide a safe and welcoming environment where students are respected and valued. We are alert to the signs of abuse and neglect and follow our procedures to ensure our students receive effective support, protection and justice. Selby College expects Governors, staff and volunteers working on behalf of the organisation to share this commitment.

Smoking Policy

Please note: Selby College campus in its entirety is a designated no smoking site.

Abbot's Road, Selby, North Yorkshire, YO8 8AT.
t: 01757 211000 e: info@selby.ac.uk
selby.ac.uk

Date of publication: July 2017 © - all rights reserved to Selby College.



Follow us on:

